

# microvalvole

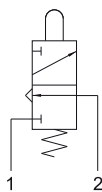
microvalves



## 304 MA

3/2 NC raccordi automatici per tubo  $\varnothing 4$  (sotto),  
pulsante

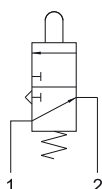
3/2 NC push-in fittings for  $\varnothing 4$  tube (ports on the bottom),  
tappet



## 314 MA

3/2 NA raccordi automatici per tubo  $\varnothing 4$  (sotto),  
pulsante

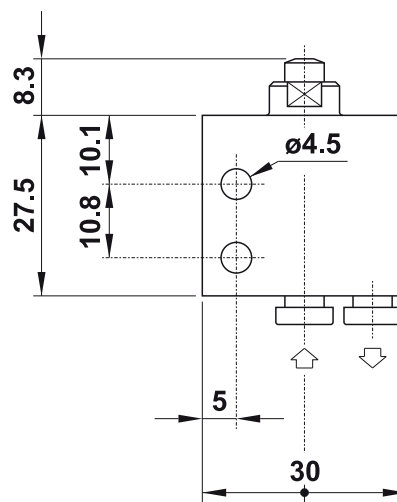
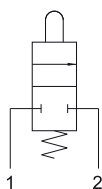
3/2 NO push-in fittings for  $\varnothing 4$  tube (ports on the bottom),  
tappet



## 204 MA

2/2 NC raccordi automatici per tubo  $\varnothing 4$  (sotto),  
pulsante

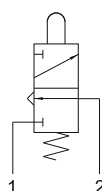
2/2 NC push-in fittings for  $\varnothing 4$  tube (ports on the bottom),  
tappet



## 305 MA

3/2 NC attacchi filettati M5 (sotto),  
pulsante

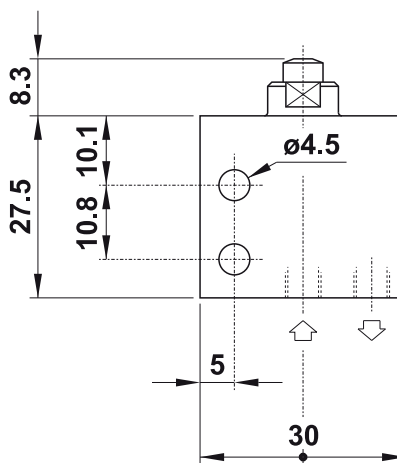
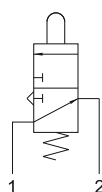
3/2 NC M5 threaded ports (on the bottom),  
tappet



## 315 MA

3/2 NA attacchi filettati M5 (sotto),  
pulsante

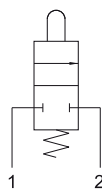
3/2 NO M5 threaded ports (on the bottom),  
tappet



## 205 MA

2/2 NC attacchi filettati M5 (sotto),  
pulsante

2/2 NC M5 threaded ports (on the bottom),  
tappet



1

1