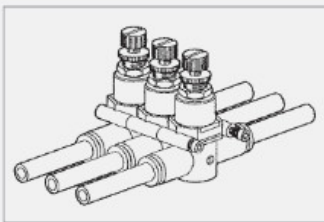




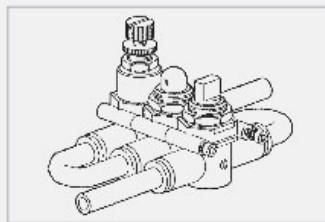
Line on Line is an exclusive range of products for mounting on pneumatic circuits. With these small, highly efficient components it is possible to perform all pneumatic functions at any point of the circuit. Line on Line is ultra-modular - the components can be connected in parallel, in series or combined parallel/series.

All Line on Line products are available for pipe-pipe connection with integral push-in fittings, or for thread-pipe connection with a brass nickel-plated male thread and an integral push-in fitting.

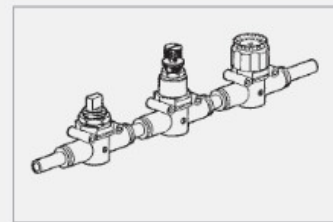
The body is made of technopolymer, giving a product that is extremely lightweight and compact. One side of the body is marked with an indelible pneumatic symbol to facilitate identification and indicate the direction of flow.



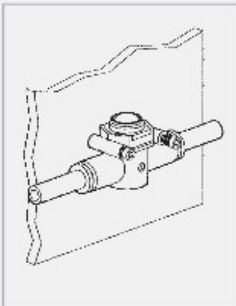
PARALLEL LINES



SERIAL LINE PARALLEL FITTING



SERIAL LINE IN-LINE FITTING



WALL FIXING

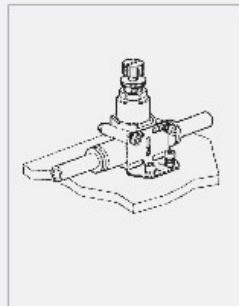
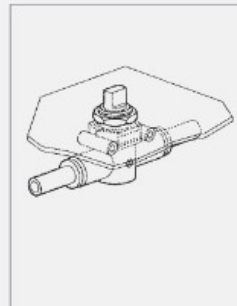
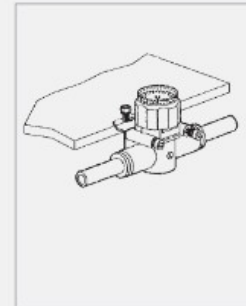


PLATE FIXING



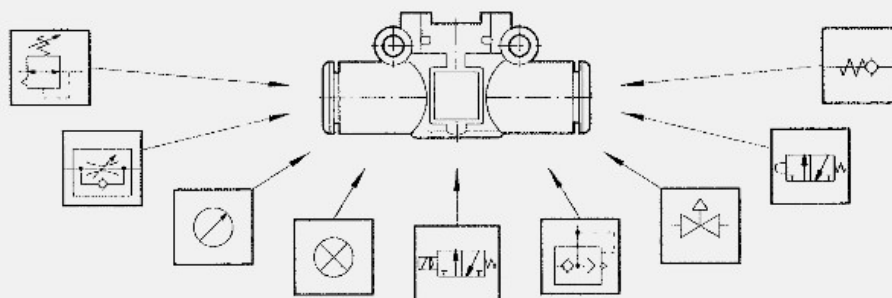
PANEL FIXING



UNDER WALL FIXING

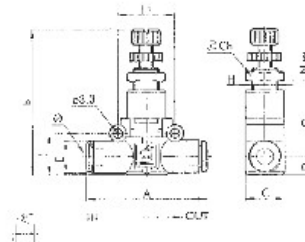
**TECHNICAL SPECIFICATIONS**

Max. operating Pressure	10 bar
Temperature range	-20°C ÷ + 60°C
Max flow rate on regulation at 6.3 bar	155 NI/min (4mm) 450 NI/min (6mm) 850 NI/min (8mm)
Adjustment	Manual or using a screwdriver
Internal system	Tapered needle
Recommended pipe	Rilson PA 11 - Nylon 6 - Polyamide 12 - Polypropylene
Fluid	Lubricated or unlubricated filtered air



### 3 FUNCTIONAL FITTINGS

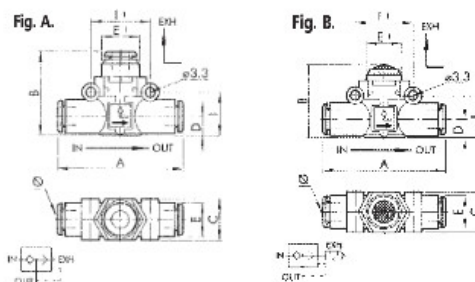
#### LINE-MOUNTED PRESSURE REGULATOR



ORDER	Ø	A	B	C	D	E	€ POS
9061316	6	47	46 ÷ 52	14.7	6.4	11.4	22.33
9061324	8	55.5	52 ÷ 58	18.7	9.1	13.8	24.18

#### INLINE QUICK EXHAUST VALVE

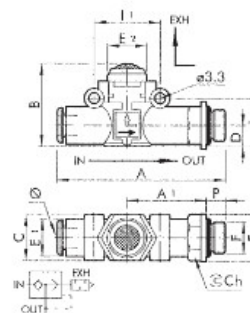
Tube to Tube



ORDER	Ø	FIG.	A	B	C	D	E	E1	I	I1	€ POS
9063016	6	A	47	29	14.7	6.4	11.4	13	14.6	20	9.07
9063024	8	A	55.5	35	18.7	9.1	13.8	15	18.7	24	9.41
9063116	6	B	47	25.5	14.7	6.4	11.4	14	14.6	20	10.20
9063124	8	B	55.5	31.5	18.7	9.1	13.8	18	18.7	24	10.36

#### INLINE QUICK EXHAUST VALVE

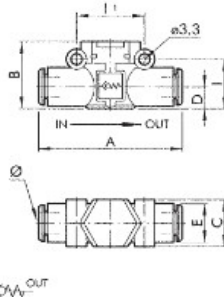
Tube to Thread



ORDER	Ø	F	P	A	A1	B	C	D	E	E1	E2	I	I1	C1	€ POS
9063308	6	1/8	6	57.3	27.8	25.5	14.7	6.4	14	11.4	14	14.6	20	12	10.94
9063309	6	1/4	8	60.3	28.8	25.5	14.7	6.4	18	11.4	14	14.6	20	14	11.08
9063310	8	1/8	6	65.5	31.8	31.5	18.7	9.1	15	13.8	18	18.7	24	13	11.23
9063311	8	1/4	8	69.7	34.2	31.5	18.7	9.1	18	13.8	18	18.7	24	14	12.31

## INLINE CHECK VALVE

Tube to Tube

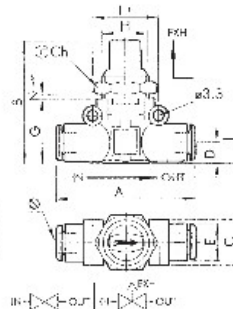


METAL WORK PNEUMATIC lineonline

ORDER	Ø	A	B	C	D	E	I	I1	€
									POS
9064016	6	47	20	14.7	6.4	11.4	14.6	20	8.79
9064024	8	55.5	25.5	18.7	9.1	13.8	18.7	24	8.88

## INLINE SHUT-OFF VALVE

Tube to Tube



### TECHNICAL DATA

Inlet Flow rate at 6.3 bar ΔP 1 bar — 280 NI/min (6mm)  
470 NI/min (8mm)

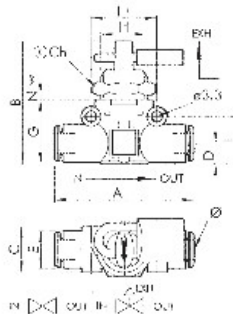
METAL WORK PNEUMATIC lineonline

ORDER	FUNCTION	Ø	A	B	C	D	E	G	H	I	I1	Ch	Nmax	€
														POS
9065016	V2V L	6	47	41	14.7	6.4	11.4	21	M15x1	14.6	20	17	5.5	15.61
9066016	V3V L	6	47	41	14.7	6.4	11.4	21	M15x1	14.6	20	17	5.5	15.61
9065024	V2V L	8	55.5	46	18.7	9.1	13.8	26	M15x1	18.7	24	17	5.5	16.61
9066024	V3V L	8	55.5	46	18.7	9.1	13.8	26	M15x1	18.7	24	17	5.5	16.61

V2V L = on/off function  
V3V L = on/off function with vent

## INLINE SHUT-OFF VALVE LOCKABLE

Tube to Tube



METAL WORK PNEUMATIC lineonline

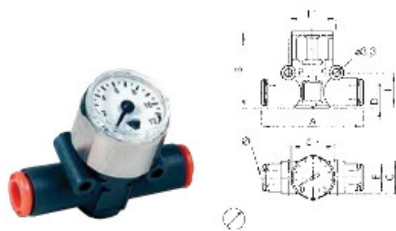
ORDER	FUNCTION	Ø	A	B	C	D	E	G	H	I	I1	Ch	Nmax	€
														POS
9065116	V2V L	6	47	41	14.7	6.4	11.4	21	M15x1	14.6	20	17	5.5	26.11
9066116	V3V L	6	47	41	14.7	6.4	11.4	21	M15x1	14.6	20	17	5.5	26.11
9065124	V2V L	8	55.5	46	18.7	9.1	13.8	26	M15x1	18.7	24	17	5.5	27.53
9066124	V3V L	8	55.5	46	18.7	9.1	13.8	26	M15x1	18.7	24	17	5.5	27.53

V2V L = on/off function  
V3V L = on/off function with vent

### 3 FUNCTIONAL FITTINGS

#### INLINE PRESSURE GAUGE

Tube to Tube



##### TECHNICAL DATA

Operating pressure \_\_\_\_\_ 12 bar  
Precision \_\_\_\_\_ +4% full scale



ORDER	Ø	A	B	C	D	E	E1	I	I1	€
										POS
9067016	6	47	35	14.7	6.4	11.4	23	14.6	20	18.47
9067024	8	55.5	41	18.7	9.1	13.8	23	18.7	24	19.83

#### INLINE PRESSURE GAUGE

Thread to Tube



##### TECHNICAL DATA

Operating pressure \_\_\_\_\_ 12 bar  
Precision \_\_\_\_\_ +4% full scale



ORDER	F	Ø	P	A	A1	B	C	D	E	E1	E2	I	I1	Ch	€
															POS
9067108	1/8	6	6	57.3	27.5	35	14.7	6.4	14	11.4	23	14.6	20	12	20.01
9067109	1/4	6	8	60.3	28.8	35	14.7	6.4	18	11.4	23	14.6	20	14	20.20
9067110	1/8	8	6	65.3	31.8	41	18.7	9.1	15	13.8	23	18.7	24	14	20.65
9067111	1/4	8	8	69.7	34.2	41	18.7	9.1	18	13.8	23	18.7	24	14	21.75

#### INLINE PRESSURE INDICATOR

Tube to Tube



A = ORANGE  
V = GREEN

##### TECHNICAL DATA

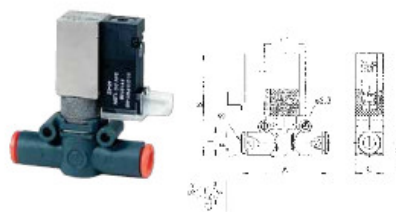
Operating pressure \_\_\_\_\_ 2 to 10 bar



ORDER	TYPE	Ø	A	B	C	D	E	E1	G	H	I	I1	Ch	Nmax	€
															POS
9068016	A	6	47	37	14.7	6.4	11.4	10.6	21	M15x1	14.6	20	17	4.5	12.38
9068216	V	6	47	37	14.7	6.4	11.4	10.6	21	M15x1	14.6	20	17	4.5	12.38
9068024	A	8	55.5	41	18.7	9.1	13.8	10.6	26	M15x1	18.7	24	17	4.5	13.32
9068224	V	8	55.5	41	18.7	9.1	13.8	10.6	26	M15x1	18.7	24	17	4.5	13.32

#### INLINE 3 PORT SOLENOID VALVE SILENCDEXHAUST

Tube to Tube



##### TECHNICAL DATA

Operating pressure \_\_\_\_\_ 2.5 to 7 bar  
Flow rate at 6.3 bar ΔP 0.5 bar \_\_\_\_\_ 270 NI/min (6mm)  
500 NI/min (8mm)  
Voltage \_\_\_\_\_ 24 VDC  
Power \_\_\_\_\_ 1.2 W



ORDER	Ø	A	B	C	D	E	I	I1	€
									POS
9069016	6	47	55.5	14.7	6.4	11.4	14.6	20	51.58
9069024	8	55.5	63.5	18.7	9.1	13.8	18.7	24	51.98

## INLINE 3 PORT SOLENOID VALVE THREADED EXHAUST

Tube to Tube

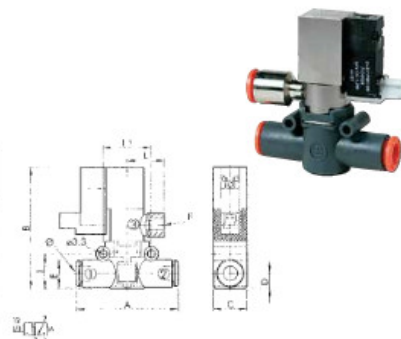


lineonline

### TECHNICAL DATA

Operating pressure \_\_\_\_\_ 2.5 to 7 bar  
 Flow rate at 6.3 bar ΔP 0.5 bar \_\_\_\_\_ 500 NI/min  
 Voltage \_\_\_\_\_ 24 VDC  
 Power \_\_\_\_\_ 1.2 W

ORDER	Ø	A	B	C	D	E	E1	I	I1	L	€
9069224	8	55.5	63.5	18.7	9.1	13.8	1/8	18.7	24	21.5	53.90



## INLINE 3 PORT SOLENOID VALVE SILENCED EXHAUST

Thread to Tube

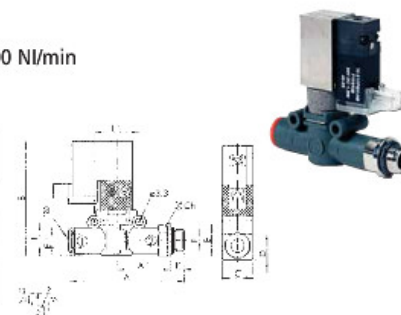


lineonline

### TECHNICAL DATA

Operating pressure \_\_\_\_\_ 2.5 to 7 bar  
 Flow rate at 6.3 bar ΔP 0.5 bar \_\_\_\_\_ 270 NI/min 500 NI/min  
 Voltage \_\_\_\_\_ 24 VDC  
 Power \_\_\_\_\_ 1.2 W

ORDER	Ø	F	P	A	A1	B	C	I	I1	Ch1	€
9069408	6	1/8	6	57.3	27.8	55.5	14.7	14.6	20	12	53.40
9069409	6	1/4	8	60.3	28.8	55.5	14.7	14.6	20	14	53.81
9069410	8	1/8	6	65.3	31.3	63.5	18.7	18.7	24	14	53.81
9069411	8	1/4	8	69.7	34.2	63.5	18.7	18.7	24	14	54.18



## INLINE 3 PORT SOLENOID VALVE SILENCED EXHAUST

Tube to Thread



lineonline

### TECHNICAL DATA

Operating pressure \_\_\_\_\_ 2.5 to 7 bar  
 Flow rate at 6.3 bar ΔP 0.5 bar \_\_\_\_\_ 270 NI/min 500 NI/min  
 Voltage \_\_\_\_\_ 24 VDC  
 Power \_\_\_\_\_ 1.2 W

ORDER	Ø	F	P	A	A1	B	C	D	E	E1	F1	I	I1	L	Ch1	€
9069610	8	1/8	6	65.3	31.8	63.5	18.7	9.1	15	13.8	1/8	18.7	24	21.5	1	55.71
9069611	8	1/4	8	69.7	34.2	63.5	18.7	9.1	18	13.8	1/8	18.7	24	21.5	1	56.12



lineonline

ORDER	DESCRIPTION	€
W0970512000	Plug in Connector 300mm Leads	1.72

## PLUG IN ELECTRICAL CONNECTOR



## FIXING BRACKET FOR ALL LINEONLINE PRODUCTS



CODE	A	B	C	F	I	I1	12	13	14	15	S	€
9062110	30	22	14.5	4.2	6.8	4.8	5.9	9.1	2	6.5	1.2	2.26

## U-TUBE



CODE	DESCRIPTION	€
9062216	6mm Tube	3.10
9062224	8mm Tube	3.79