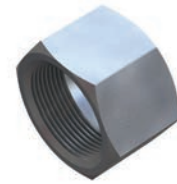
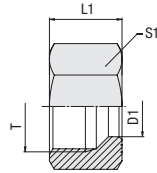


Union Nut
Type FI-M • Series LL / L / S

B

Series	Tube OD		PN (bar/PSI)	Dimensions (mm/in)			Weight (kg/lbs) ca. per 100	Ordering Codes	
	D1			Thread T	L1	S1			
LL	4	100		M 8 x 1	11	10	0,40	FI-M-04LL-W3	
	.16	1450			.43	.39	.88		
	6	100		M 10 x 1	11,5	12	0,50	FI-M-06LL-W3	
	.24	1450			.45	.47	1.10		
	8	100		M 12 x 1	12	14	0,70	FI-M-08LL-W3	
	.31	1450			.47	.55	1.54		
	10	100		M 14 x 1	12,5	17	1,10	FI-M-10LL-W3	
	.39	1450			.49	.67	2.42		
	12	100		M 16 x 1	13	19	1,30	FI-M-12LL-W3	
	.47	1450			.51	.75	2.86		
	L	6	500		M 12 x 1,5	14,5	14	0,90	FI-M-06L-W3
		.24	7250			.57	.55	1.98	
8		500		M 14 x 1,5	14,5	17	1,40	FI-M-08L-W3	
.31		7250			.57	.67	3.08		
10		500		M 16 x 1,5	15,5	19	1,70	FI-M-10L-W3	
.39		7250			.61	.75	3.74		
12		400		M 18 x 1,5	15,5	22	2,40	FI-M-12L-W3	
.47		5800			.61	.87	5.28		
15		400		M 22 x 1,5	17	27	4,10	FI-M-15L-W3	
.59		5800			.67	1.06	9.02		
18		400		M 26 x 1,5	18	32	6,00	FI-M-18L-W3	
.71		5800			.71	1.26	13.20		
22		250		M 30 x 2	20	36	8,00	FI-M-22L-W3	
.87		3625			.79	1.42	17.60		
28		250		M 36 x 2	22	41	14,20	FI-M-28L-W3	
1.10		3625			.87	1.61	31.24		
35		250		M 45 x 2	25	50	19,80	FI-M-35L-W3	
1.38		3625			.98	1.97	43.56		
42	250		M 52 x 2	25	60	22,00	FI-M-42L-W3		
1.65	3625			.98	2.36	48.40			
S	6	800		M 14 x 1,5	16,5	17	1,70	FI-M-06S-W3	
	.24	11600			.65	.67	3.74		
	8	800		M 16 x 1,5	16,5	19	2,00	FI-M-08S-W3	
	.31	11600			.65	.75	4.40		
	10	800		M 18 x 1,5	17,5	22	3,00	FI-M-10S-W3	
	.39	11600			.69	.87	6.60		
	12	630		M 20 x 1,5	17,5	24	3,40	FI-M-12S-W3	
	.47	9135			.69	.94	7.48		
	14	630		M 22 x 1,5	20,5	27	5,20	FI-M-14S-W3	
	.55	9135			.81	1.06	11.44		
	16	630		M 24 x 1,5	20,5	30	6,50	FI-M-16S-W3	
	.63	9135			.81	1.18	14.30		
	20	420		M 30 x 2	24	36	10,10	FI-M-20S-W3	
	.79	6091			.94	1.42	22.22		
	25	420		M 36 x 2	27	46	19,80	FI-M-25S-W3	
	.98	6091			1.06	1.81	43.56		
	30	420		M 42 x 2	29	50	21,60	FI-M-30S-W3	
	1.18	6091			1.14	1.97	47.52		
38	420		M52 x 2	32,5	60	31,40	FI-M-38S-W3		
1.50	6091			1.28	2.36	69.08			

Ordering Codes
***FI-M*-15*L*-W3**

* Union Nut		FI-M
* Outside Tube Diameter D1 (in mm)		-15
* Series	Extra-Light Series	LL
	Light Series	L
	Heavy Series	S
* Material Code	Steel, zinc/nickel-plated	-W3

Please contact STAUFF for alternative materials and surface finishings.

