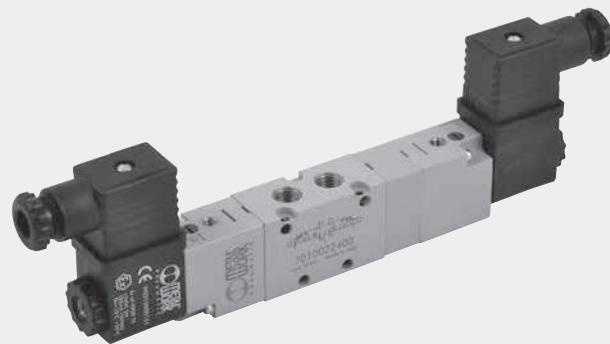


# VALVES SERIES 70, SOLENOID/PNEUMATIC

TECHNICAL DATA	1/8"	1/4"	3/8"	1/2"
Operating pressure:				
• monostable and bistable differential	bar 2.5 to 10			
• bistable	bar 1 to 10			
• asserved	bar Vacuum to 10			
Minimum pilot pressure	bar 2.5			
Operating temperature range	°C -10 to +60			
Nominal diameter	mm 5	7.5	13.3	15
Conductance C	Nl/min · bar 121.43	264.26	505.52	971.43
Critical ratio b	bar/bar 0.32	0.27	0.32	0.43
Flow rate at 6 bar ΔP 0.5 bar	Nl/min 400	750	1560	3200
Flow rate at 6 bar ΔP 1 bar	Nl/min 550	1100	2150	4600
TRA / TRR monostable at 6 bar	ms 15/35	19/45	21/72	36/100
TRA / TRR bistable at 6 bar	ms 20/20	21/21	18/18	25/25
Coil voltage values	12; 24 VDC - 24; 110; 220V AC 50/60Hz			
Power	2 W (DC) 3.5VA (AC)			
Voltage tolerance	% -10 to +15			
Insulation class	F 155			
Maximum coil nut torque	Nm 1			
Hand operation	Bistable			*



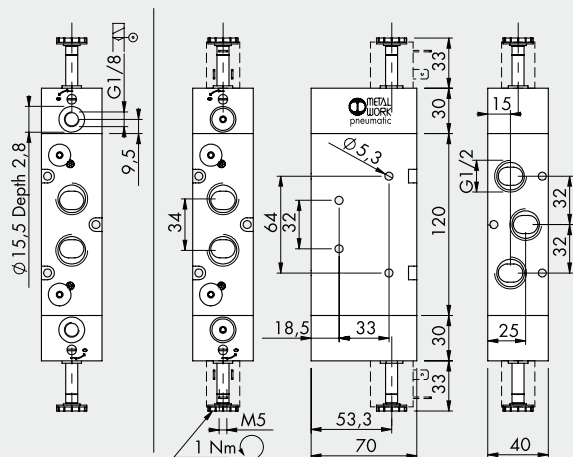
\* Bistable on solenoid pilot. Monostable on valve body.

## SYNOPTIC, SIZES AND VERSIONS

SO V FAMILY	2 DIMENSIONS	3 FUNCTION	SO OPERATORS 14	S RESETTING (12)	N C FURTHER DETAILS
SOV solenoid/ pneumatic	2 1/8"	3 3/2	SO solenoid	S mechanical springs	OO no indication
	3 1/4"	5 5/2	SE solenoid assisted	B bistable	NC normally closed
	C 3/8"	6 5/3		D differential	NO normally open
	4 1/2"	■ 8 2-3/2		P pneumatic	CC closed centres
				◆ A pneumatic/mechanical spring	OC open centres
					PC pressure centres
					▲ NC-NO normally closed - normally open

- Only available for size 1/8" and 1/4"
- ◆ On demand
- ▲ Only available for function 2-3/2

## MONOSTABLE 5/3, 1/2"



Symbol	Code	Abbrev.	Weight [g]
	7030022100	SOV 46 SOS CC	1265
	7030022200	SOV 46 SOS OC	1265
	7030022300	SOV 46 SOS PC	1265
	7030022400	SOV 46 SES CC	1252
	7030022500	SOV 46 SES OC	1252
	7030022600	SOV 46 SES PC	1252