



# PNEUMATIC COUPLING

WITH FREE ROTATION THROUGH  $360^{\circ}$

MAKES ALL RIGID HOSE FLEXIBLE AND  
MULTI-DIRECTIONAL.



## • Savings

No more premature supply hosewear.

## • Easy

Less effort due to hose rigidity; makes  
work easier in hard to access areas.

## • Comfort

No twisting, the hose remains in the  
ideal working position.

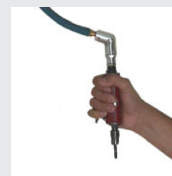
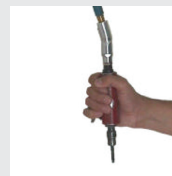


1/4"

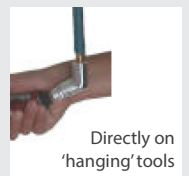
3/8"

1/2"

### 360 DEGREE ROTATION



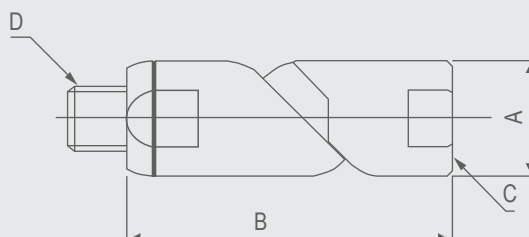
### ASSEMBLY



A must for all fields including maintenance and mechanical repair,  
deburring, mounting, element assembly, public works, etc.

## Technical Specifications

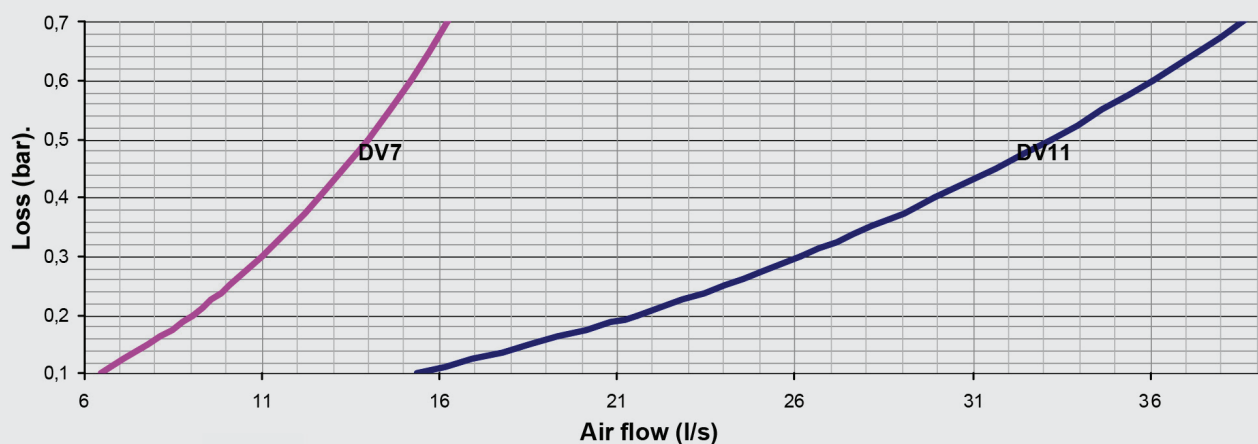
Two cross-sections, six references:  
Male - Female connector



Recommended use:  
Connections for applications  
using air, fluids.

### Flow chart

Loss of pressure according to flow (entry pressure of 6 bar).



CODE	DV7MFG14	DV11MFG38	DV11MFG12
Thread (D)	G 1/4"	G 3/8"	G 1/2"
Internal Ø mm	7mm	11mm	11mm
A	24	24	29.5
B	67	67	82
C	Internal thread Gas 1/4"	Internal thread Gas 3/8"	Internal thread Gas 1/2"
Weight	79 g.	126 g.	132 g.
Recommended flow	12 l/s	30 l/s	

Dimensions are given in mm, for information and are subject to change. Nominal pressure 10 bars . Operating temperature: -10, + 70°C.

