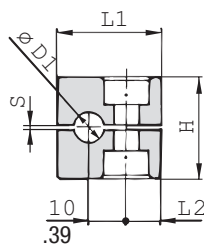
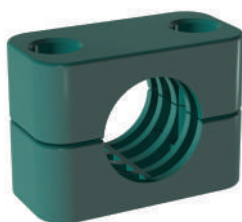


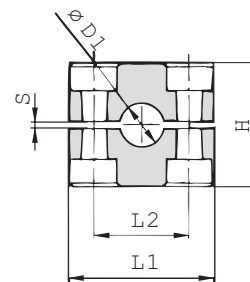
Clamp Body - Profiled Design

Profiled Inside Surface with Tension Clearance

A



STAUFF Group 1



STAUFF Group 1A to 8

Ordering Codes

Clamp Body

Clamp Body, STAUFF Group 1A

*1*06-*PP

*1*06A-*PP

One clamp body is consisting of two clamp halves.

* STAUFF Group

1

* Exact outside diameter Ø D1 (mm)

06

* Material code (see below)

PP

Standard Materials



Polypropylene

Colour: Green
Material code: **PP**



Polypropylene

Colour: Black
Material code: **PP-BK**



Polyamide

Colour: Black
Material code: **PA**



Thermoplastic Elastomer (87 Shore-A)

Colour: Black
Material code: **SA**



Aluminium

Colour: Self-Colour
Material code: **AL** (STAUFF Group 1A to 6)

See pages 154 / 155 for material properties and technical information.

Special Materials

Please contact STAUFF for further details on fire-proof clamp body materials, tested and approved according to several international fire-protection standards (such as BS 6853, EN 45545-2, UL 94 and many more).

See pages 156 / 157 for material properties and technical information.

Product Features

- Proven, tested and trusted product in various markets
- Recommended for the safe installation of rigid pipes and tubes
- Available for all commonly used pipe and tube outside diameters
- Environmental protection due to vibration/noise reducing design
- Excellent weathering resistance, even under extreme conditions

Group	STAUFF	DIN	Outside Diameter		Nominal Bore	Copper Tube	Ordering Codes	Dimensions							
			Pipe / Tube	Ø D1				Pipe	ASTM B88	(2 Clamp Halves)	(mm/in)	L1	L2	H	S min.
1	0	6					106-**								
		6,4	1/4				106.4-**								
		8	5/16				108-**	28	9,5	27	0,4	30			
		9,5	3/8		1/4		109.5-**	1.10	.37	1.06	.02	1.18			
		10		1/8			110-**								
1A	1	6					106A-**								
		6,4	1/4				106.4A-**								
		8	5/16				108A-**	37	20	27	0,4	30			
		9,5	3/8		1/4		109.5A-**	1.46	.79	1.06	.02	1.18			
		10		1/8			110A-**								
2	2	12					112-**								
		12,7	1/2		3/8		212.7-**								
		13,5		1/4			213.5-**								
		14					214-**								
		15					215-**	42	26	33	0,6	30			
3	3	16	5/8		1/2		216-**	1.65	1.02	1.30	.02	1.18			
		17,2		3/8			217.2-**								
		18					218-**								
		19	3/4				319-**								
		20					320-**								
4	4	21,3		1/2			321.3-**	50	33	36	0,6	30			
		22	7/8		3/4		322-**	1.97	1.30	1.42	.02	1.18			
		25					325-**								
		25,4	1				325.4-**								
		26,9		3/4			426.9-**								
5	5	28					428-**								
		28,6			1		428.6-**	59	40	42	0,6	30			
		30					430-**	2.32	1.57	1.65	.02	1.18			
		32					432-**								
		32	1-1/4				532-**								
6	6	33,7		1			533.7-**								
		35			1-1/4		535-**								
		38	1-1/2				538-**	71	52	58	0,8	30			
		40					540-**	2.80	2.05	2.28	.03	1.18			
		41,3		1-1/2			541.3-**								
7	7	42		1-1/4			542-**								
		44,5	1-3/4				644.5-**								
		48,3		1-1/2			648.3-**	86	66	66	0,8	30			
		50,8	2				650.8-**	3.39	2.60	2.60	.03	1.18			
		54		2			654-**								
8	8	57,2	2-1/4				757.2-**								
		60,3		2			760.3-**								
		63,5	2-1/2				763.5-**	121	94	93	0,8	30			
		70	2-3/4				770-**	4.76	3.70	3.66	.03	1.18			
		73		2-1/2 (ANSI B 36-10)			773-**								
8	8	76,1	3	2-1/2 (DIN EN 10220)			776.1-**								
		88,9		3			888.9-**	147	120	118	0,8	30			
							102	4	3-1/2						
							8102L-**	5.79	4.72	4.65	.03	1.18			

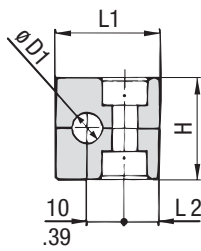
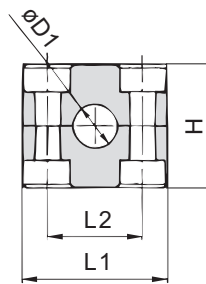
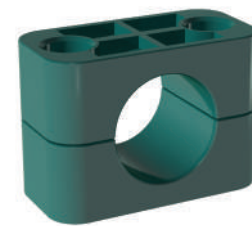
Additional outside diameters are available upon request. Please contact STAUFF for further information.

Dimensional drawings: All dimensions in mm (in).



Clamp Body - Type H

Smooth Inside Surface without Tension Clearance


STAUFF Group 1

STAUFF Group 1A to 8

A

Group	STAUFF	DIN	Outside Diameter		Ordering Codes (2 Clamp Halves)	Dimensions (mm/in)			
			Hose Ø D1 (mm)	(in)		(** - H = Material)	L1	L2	H
1	0	6			106-**-H	28	9,5	26	30
		6,4	1/4	106.4-**-H					
		8	5/16	108-**-H					
		9,5	3/8	109.5-**-H					
		10		110-**-H					
		12		112-**-H					
1A	1	6			106A-**-H	37	20	26	30
		6,4	1/4	106.4A-**-H					
		8	5/16	108A-**-H					
		9,5	3/8	109.5A-**-H					
		10		110A-**-H					
		12		112A-**-H					
2	2	12,7	1/2		212.7-**-H	42	26	32	30
		13,5		213.5-**-H					
		14		214-**-H					
		15		215-**-H					
		16	5/8	216-**-H					
		17,2		217.2-**-H					
		18		218-**-H					
3	3	19	3/4		319-**-H	50	33	35,5	30
		20		320-**-H					
		21,3		321.3-**-H					
		22	7/8	322-**-H					
		25		325-**-H					
		25,4	1	325.4-**-H					
4	4	26,9			426.9-**-H	59	40	41,5	30
		28		428-**-H					
		30		430-**-H					
		32		432-**-H					
		32	1-1/4	532-**-H					
5	5	33,7			533.7-**-H	71	52	56,5	30
		35		535-**-H					
		38	1-1/2	538-**-H					
		40		540-**-H					
		42		542-**-H					
		44,5	1-3/4	644.5-**-H					
6	6	48,3			648.3-**-H	86	66	64,5	30
		50,8	2	650.8-**-H					
		54		654-**-H					
		57,2	2-1/4	757.2-**-H					
		60,3		760.3-**-H					
7	7	63,5	2-1/2		763.5-**-H	121	94	92	30
		70	2-3/4	770-**-H					
		73		773-**-H					
		76,1	3	776.1-**-H					
		88,9		888.9-**-H					
8	8	102	4		8102L-**-H	147	120	116	30
						5,79	4,72	4,57	1,18

Additional outside diameters are available upon request. Please contact STAUFF for further information.

Ordering Codes
Clamp Body *1*06-*PP-H
Clamp Body, STAUFF Group 1A *1*06A-*PP-H

One clamp body is consisting of two clamp halves.

* STAUFF Group	1
* Exact outside diameter Ø D1 (mm)	06
* Material code (see below)	PP-H

Standard Materials

Polypropylene
 Colour: Green
 Material code: **PP-H**

Polypropylene
 Colour: Black
 Material code: **PP-H-BK**

Polyamide
 Colour: Black
 Material code: **PA-H**

Thermoplastic Elastomer (87 Shore-A)
 Colour: Black
 Material code: **SA-H**

See pages 154 / 155 for material properties and technical information.

Special Materials

Please contact STAUFF for further details on fire-proof clamp body materials, tested and approved according to several international fire-protection standards (such as BS 6853, EN 45545-2, UL 94 and many more).

See pages 156 / 157 for material properties and technical information.

Product Features

- Proven, tested and trusted product in various markets
- Recommended for the safe installation of hoses and cables
- Chamfered edges avoid damaging of the hoses and cables
- Available for all commonly used hose and cable outside diameters
- Excellent weathering resistance, even under extreme conditions

