

Ball eye rod end AP6, series CM2

- with flange, to mount on cylinder PRA, TRB, CCI, SSI, MNI, RPC, KPZ, 167, CVI, RDC, 102, ITS



Weight

See table below

Technical data

Part No.	Suitable piston rod thread	for	Swivel bearing Ø
1822124000	M4	MNI SSI	5 mm
1822124001	M6	MNI CCI SSI	152.4 mm
1822124002	M8	MNI CCI SSI KPZ	203.2 mm
8958206402	M10	RPC	254 mm
8958208852	M12	KHZ	304.8 mm
1822124003	M10x1,25	PRA TRB MNI CCI SSI RPC KPZ 167 CVI RDC	254 mm
1822124004	M12x1,25	PRA TRB CCI SSI RPC KPZ 167 CVI 102	304.8 mm
1822124005	M16x1,5	PRA TRB CCI SSI RPC KPZ 167 CVI RDC 102	406.4 mm
1822124006	M20x1,5	PRA TRB KPZ 167 CVI 102	508 mm
8958208002	M24x2	102	635 mm
1822124013	M27x2	PRA TRB 167 CVI	762 mm
1822124008	M36x2	ITS	889 mm
1822124009	M42x2	ITS	1016 mm
8958208842	M48x2	ITS	1270 mm

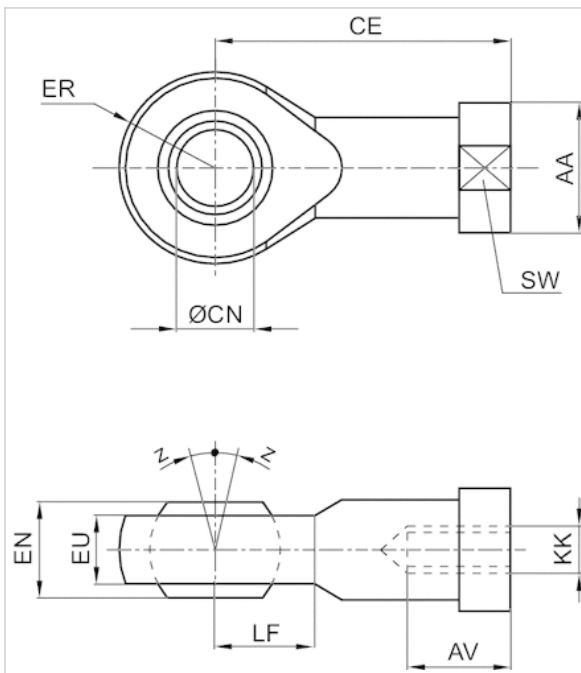
Part No.	Weight
1822124000	0.02 kg
1822124001	0.03 kg
1822124002	0.05 kg
8958206402	0.07 kg
8958208852	0.11 kg
1822124003	0.07 kg
1822124004	0.12 kg
1822124005	0.21 kg
1822124006	0.38 kg
8958208002	0.73 kg
1822124013	1.17 kg
1822124008	2 kg

Part No.	Weight
1822124009	3.4 kg
8958208842	5.2 kg

Technical information

Material	
	Steel
	galvanized

Dimensions



Dimensions

Part No.	KK	AA	AV min.	CE	Ø CN H7	EN -0,1	ER	EU max.	LF	SW	Z [°] max.
1822124000	M4	12	8	27	5	8	9	7.5	9	9	4
1822124001	M6	13	9	30	6	9	10	7.5	10	11	4
1822124002	M8	16	12	36	8	12	12	9.5	12	14	4
8958206402	M10	19	20	43	10	14	14	10.5	13	17	6
8958208852	M12	22	22	50	12	16	16	12	16	19	13
1822124003	M10x1,25	19	15	43	10	14	14	11.5	14	17	4
1822124004	M12x1,25	22	18	50	12	16	16	12.5	16	19	4
1822124005	M16x1,5	27	24	64	16	21	21	15.5	21	22	4
1822124006	M20x1,5	34	30	77	20	25	25	18.5	25	30	4
8958208002	M24x2	42	36	94	25	31	30	23	30	36	15
1822124013	M27x2	50	45	110	30	37	35	27	35	41	4
1822124008	M36x2	60	56	125	35	43	40	32	40	50	4