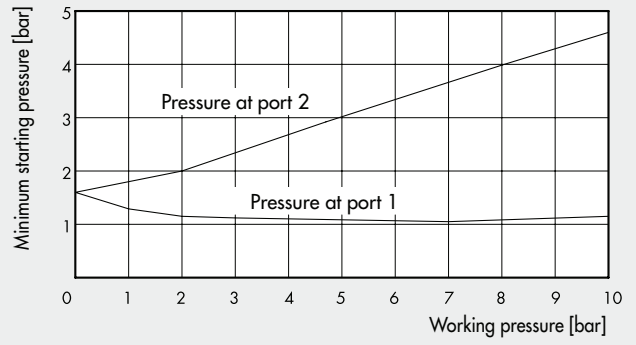


STARTING PRESSURE

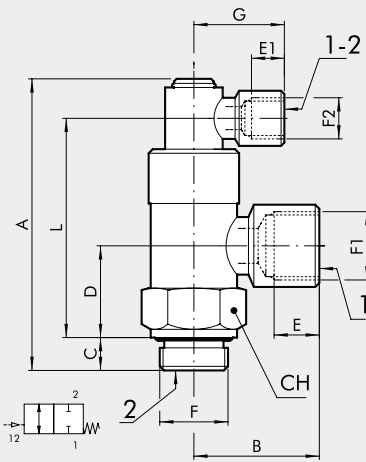
UNIDIRECTIONAL VALVE



BIDIRECTIONAL VALVE

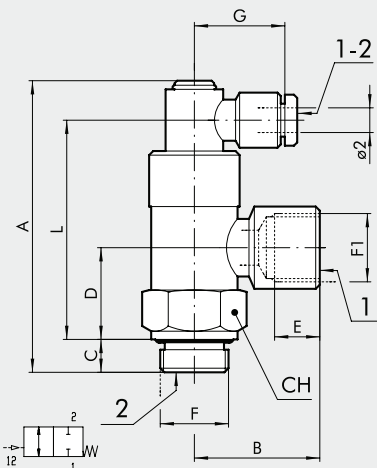


BIDIRECTIONAL THREADED STOP VALVE



Code	Description	F	F1	F2	A	B	C	D	E	E1	G	L	CH
W6001101001	STP-B 1/8 108	G 1/8	G 1/8	G 1/8	57.5	21.5	6.9	16	7	7	21.5	41.9	14
W6001111011	STP-B 1/4 104	G 1/4	G 1/4	G 1/8	65.7	25.5	8	19.5	8	7	21.5	48.1	17
W6001121021	STP-B 3/8 138	G 3/8	G 3/8	G 1/8	70.9	31	8	22.3	10	7	21.5	53.3	22
W6001131031	STP-B 1/2 112	G 1/2	G 1/2	G 1/8	83.5	40	12	27	14	7	21	61.5	27
W6001141041	STP-B 3/4 134	G 3/4	G 3/4	G 1/8	93.5	39	12	32.5	16	7	21	74	32

THREAD + PIPE BIDIRECTIONAL STOP VALVE



Code	Description	F	F1	Ø 2	A	B	C	D	E	G	L	CH
W6001101002	STP-BX 1/8-1/8 04	G 1/8	G 1/8	4	57.5	21.5	6.9	16	7	25	41.9	14
W6001111012	STP-BX 1/4-1/4 04	G 1/4	G 1/4	4	65.7	25.5	8	19.5	8	25	48.1	17
W6001121022	STP-BX 3/8-3/8 04	G 3/8	G 3/8	4	70.9	31	8	22.3	10	25	53.3	22