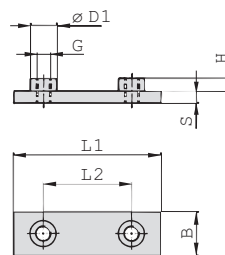
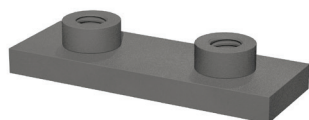


Weld Plate for Single Clamps
Type SPAL



B

Ordering Codes

Weld Plate

***SPAL-*3S-*M-*W2**

* Weld Plate for Single Clamps		SPAL
* STAUFF Group		3S
* Thread code	Metric ISO thread	M
	Unified coarse (UNC) thread	U
* Material code	Carbon Steel, uncoated	W1
	Carbon Steel, phosphated	W2
	Carbon Steel, zinc/nickel-plated	W3
	Stainless Steel V2A	W4
	1.4301 / 1.4305 (AISI 304 / 303)	
	Stainless Steel V4A	W5
	1.4401 / 1.4571 (AISI 316 / 316 Ti)	

Group	STAUFF	DIN	Dimensions (mm / in)					Thread G	ØD1	Ordering Codes (Standard Options)
			L1	L2	B	S	H			
3S	1	1	74	33	30	8	8	M10	18	SPAL-3S-M-W2
			2.91	1.30	1.18	.31	.31	3/8-16 UNC	.71	SPAL-3S-U-W2
4S	2	2	86	45	30	8	8	M10	18	SPAL-4S-M-W2
			3.39	1.77	1.18	.31	.31	3/8-16 UNC	.71	SPAL-4S-U-W2
5S	3	3	100	60	30	8	8	M10	18	SPAL-5S-M-W2
			3.94	2.36	1.18	.31	.31	3/8-16 UNC	.71	SPAL-5S-U-W2
6S	4	4	140	90	45	10	8	M12	20	SPAL-6S-M-W2
			5.51	3.54	1.77	.39	.31	7/16-14 UNC	.78	SPAL-6S-U-W2
7S	5	5	180	122	60	10	12	M16	24	SPAL-7S-M-W2
			7.09	4.80	2.36	.39	.47	5/8-11 UNC	.94	SPAL-7S-U-W2
8S	6	6	226	168	80	15	18	M20	30	SPAL-8S-M-W1
			8.90	6.61	3.15	.59	.71	3/4-10 UNC	1.18	SPAL-8S-U-W1
9S	7	7	270	205	90	15	21	M24	35	SPAL-9S-M-W1
			10.63	8.07	3.54	.59	.83	7/8-9 UNC	1.38	SPAL-9S-U-W1
10S	8	8	340	265	120	25	21	M30	45	SPAL-10S-M-W1
			13.39	10.43	4.72	.98	.83	1-1/8-7 UNC	1.77	SPAL-10S-U-W1
11S	9	9	520	395	160	30	38	M30	50	SPAL-11S-M-W1
			20.47	15.55	6.30	1.18	1.50	1-1/4-7 UNC	1.97	SPAL-11S-U-W1
12S	10	10	680	534	180	30	38	M30	50	SPAL-12S-M-W1
			27.16	21.02	7.09	1.18	1.50	1-1/4-7 UNC	1.97	SPAL-12S-U-W1

All threaded parts are available with Metric ISO thread or unified coarse (UNC) thread according to dimension table. Alternative materials and surface finishings are available upon request. Contact STAUFF for further information.