

Foot mounting, Series MS3

- Cylinder mounting in accordance with ISO 6432
- Suitable piston Ø 20 25 mm



Standards

ISO 6432

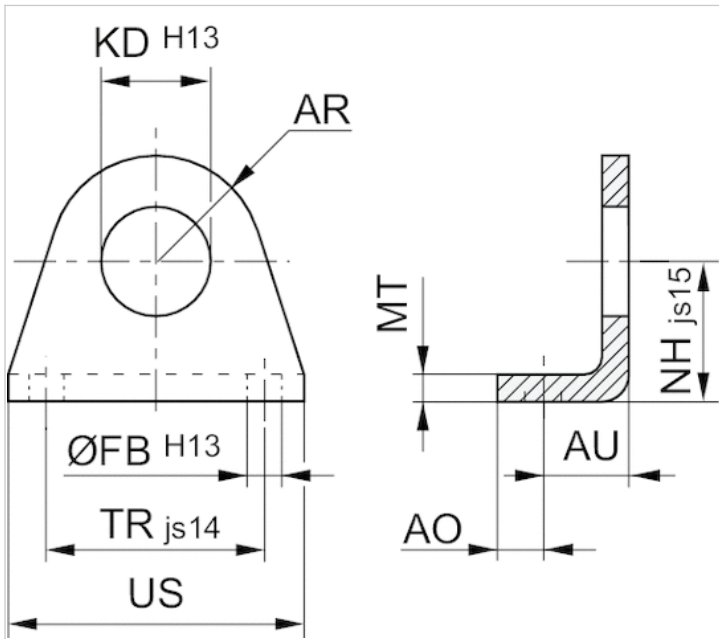
Technical data

Part No.	Piston Ø	Housing material	Surface
3322210000	8 10 mm	Stainless steel	-
3322216000	12 16 mm	Stainless steel	-
3322220000	20 25 mm	Stainless steel	-
3322232000	32 mm	Stainless steel	-
1821332029	8 10 mm	Steel	galvanized
1821332028	12 16 mm	Steel	galvanized
1821332027	20 25 mm	Steel	galvanized

Technical information

Material	
Material	Stainless steel Steel
	galvanized

Dimensions



Dimensions

Part No.	Piston Ø	AO	AR	AU	Ø FBH13	Ø KDH13	MT	NH±0,3 js15	TRjs14	US
3322210000	8 10 mm	5	10	11	4.5	12	3	16	25	35
3322216000	12 16 mm	6	12.5	14	5.5	16.1	4	20	32	42
3322220000	20 25 mm	8	20	17.5	6.6	22.1	5	25	40	54
3322232000	32 mm	9	24	20	6.6	30.1	5	32	48	65
1821332029	8 10 mm	5	10	11	4.5	12.1	3	16	25	35
1821332028	12 16 mm	6	13	14	5.5	16.1	4	20	32	42
1821332027	20 25 mm	8	20	17	6.6	22.1	5	25	40	54