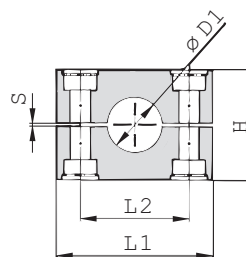
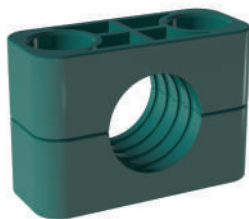


## Clamp Body - Profiled Design

Profiled Inside Surface with Tension Clearance



B

### Ordering Codes

#### Clamp Body

**\*3\*006-\*PP**

One clamp body is consisting of two clamp halves.

- \* 1<sup>st</sup> part of STAUFF Group **3**
- \* Exact outside diameter Ø D1 (mm) **006**
- \* Material code (see below) **PP**

### Standard Materials



**Polypropylene**  
Colour: Green  
Material code: **PP**



**Polypropylene**  
Colour: Black  
Material code: **PP-BK**



**Polyamide**  
Colour: Black  
Material code: **PA**



**Thermoplastic Elastomer (87 Shore-A)**  
Colour: Black  
Material code: **SA**



**Aluminium**  
Colour: Self-Colour  
Material code: **AL**

See pages 154 / 155 for material properties and technical information.

### Special Materials

Please contact STAUFF for further details on fire-proof clamp body materials, tested and approved according to several international fire-protection standards (such as BS 6853, EN 45545-2, UL 94 and many more).

See pages 156 / 157 for material properties and technical information.

### Product Features

- Proven, tested and trusted product in various markets
- Recommended for the safe installation of rigid pipes and tubes
- Available for all commonly used pipe and tube outside diameters
- Environmental protection due to vibration/noise reducing design
- Excellent weathering resistance, even under extreme conditions

Group	STAUFF	DIN	Outside Diameter		Nominal Bore		Ordering Codes (2 Clamp Halves) (** = Material)	Dimensions (mm/in)					
			Pipe / Tube Ø D1 (mm)	(in)	Pipe (in)	Copper Tube ASTM B88 (in)		L1 PP/PA/SA	L1 AL	L2	H	S min.	Width
3S	1	6					3006-**-**	55	56	33	32	0,6	30,5
		6,4	1/4			3006.4-**-**							
		8	5/16			3008-**-**							
		9,5	3/8	1/4		3009.5-**-**							
		10		1/8		3010-**-**							
		12				3012-**-**							
		12,7	1/2	3/8		3012.7-**-**							
		13,5		1/4		3013.5-**-**							
		14				3014-**-**							
		15				3015-**-**							
		16	5/8	1/2		3016-**-**							
		17,2		3/8		3017.2-**-**							
		18				3018-**-**							
		20				3020-**-**							
4S	2	19	3/4			4019-**-**	70	70	45	48	0,6	30,5	
		20				4020-**-**							
		21,3		1/2		4021.3-**-**							
		22	7/8	3/4		4022-**-**							
		25				4025-**-**							
		25,4	1			4025.4-**-**							
		26,9		3/4		4026.9-**-**							
		28				4028-**-**							
		30				4030-**-**							
		30				5030-**-**							
5S	3	32	1-1/4			5032-**-**	85	85	60	60	0,6	30,5	
		33,7		1		5033.7-**-**							
		35		1-1/4		5035-**-**							
		38	1-1/2			5038-**-**							
		40				5040-**-**							
		41,3		1-1/2		5041.3-**-**							
		42		1-1/4		5042-**-**							
		38	1-1/2			6038-**-**							
		42		1-1/4		6042-**-**							
		44,5	1-3/4			6044.5-**-**							
6S	4	48,3		1-1/2		6048.3-**-**	115	120	90	89	2	45	
		50,8	2			6050.8-**-**							
		54		2		6054-**-**							
		55				6055-**-**							
		57				6057-**-**							
		57,2	2-1/4			6057.2-**-**							
		60,3		2		6060.3-**-**							
		63,5	2-1/2			6063.5-**-**							
		65				6065-**-**							
		70	2-3/4			6070-**-**							

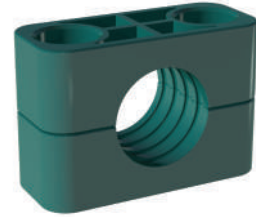
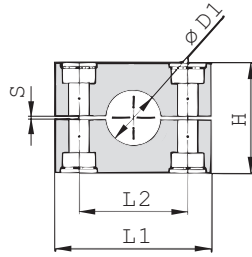
See page 37 for STAUFF Group 7S to 12S (DIN Group 5 to 10).

Additional outside diameters are available upon request. Please contact STAUFF for further information.



Clamp Body - Profiled Design

Profiled Inside Surface with Tension Clearance



B

Group	DIN	Outside Diameter		Nominal Bore	Ordering Codes (2 Clamp Halves) (** = Material)	Dimensions (mm/in)					
		Pipe / Tube Ø D1 (mm)	(in)			Pipe (in)	L1 PP/PA	L1 AL	L2	H	S min.
7S	5	60,3			7060.3-***	154	152	122	120	2	60
		65			7065-***						
		70	2-3/4		7070-***						
		73		2-1/2 (ANSI B 36-10)	7073-***						
		75			7075-***						
		76,1	3	2-1/2 (DIN EN 10220)	7076.1-***						
		80			7080-***						
		82,5			7082.5-***						
		88,9	3-1/2	3	7088.9-***						
8S	6	88,9	3-1/2	3	8088.9-***	206	208	168	168	2	80
		100			8100-***						
		102	4	3-1/2	8102-***						
		108			8108-***						
		114	4-1/2	4	8114-***						
		127	5		8127-***						
		133			8133-***						
9S	7	127	5		9127-***	251	255	205	200	3	91
		133			9133-***						
		140		5	9140-***						
		152	6		9152-***						
		159			9159-***						
		165			9165-***						
10S	8	168		6	9168-***	336	326	265	270	3	120
		177,8			10177.8-***						
		193,7			10193.7-***						
		203	8		10203-***						
		216			10216-***						
11S	9	219		8	10219-***	470	470	395	410	8	162
		273		10	11273-***						
		324		12	11324-***						
12S	10	356		14	12356-***	630	630	534	530	20	182
		406		16	12406-***						

**Ordering Codes**

**Clamp Body** **\*7\*060.3-\*PP**

One clamp body is consisting of two clamp halves.

\* 1<sup>st</sup> part of STAUFF Group **7**  
 \* Exact outside diameter Ø D1 (mm) **060.3**  
 \* Material code (see below) **PP**

Standard Materials

- Polypropylene**  
Colour: Green  
Material code: **PP**
- Polypropylene**  
Colour: Black  
Material code: **PP-BK**
- Polyamide**  
Colour: Black  
Material code: **PA**
- Aluminium**  
Colour: Self-Colour  
Material code: **AL**

See pages 154 / 155 for material properties and technical information.

Special Materials

Please contact STAUFF for further details on fire-proof clamp body materials, tested and approved according to several international fire-protection standards (such as BS 6853, EN 45545-2, UL 94 and many more).

See pages 156 / 157 for material properties and technical information.

Product Features

- Proven, tested and trusted product in various markets
- Recommended for the safe installation of rigid pipes and tubes
- Available for all commonly used pipe and tube outside diameters
- Environmental protection due to vibration/noise reducing design
- Excellent weathering resistance, even under extreme conditions

See page 36 for STAUFF Group 3S to 6S (DIN Group 1 to 4).

Additional outside diameters are available upon request. Please contact STAUFF for further information.

