

# Impulse Generator

## Valve operation

It is a device which produces an adjustable impulse of fixed duration by adjusting screw (R).

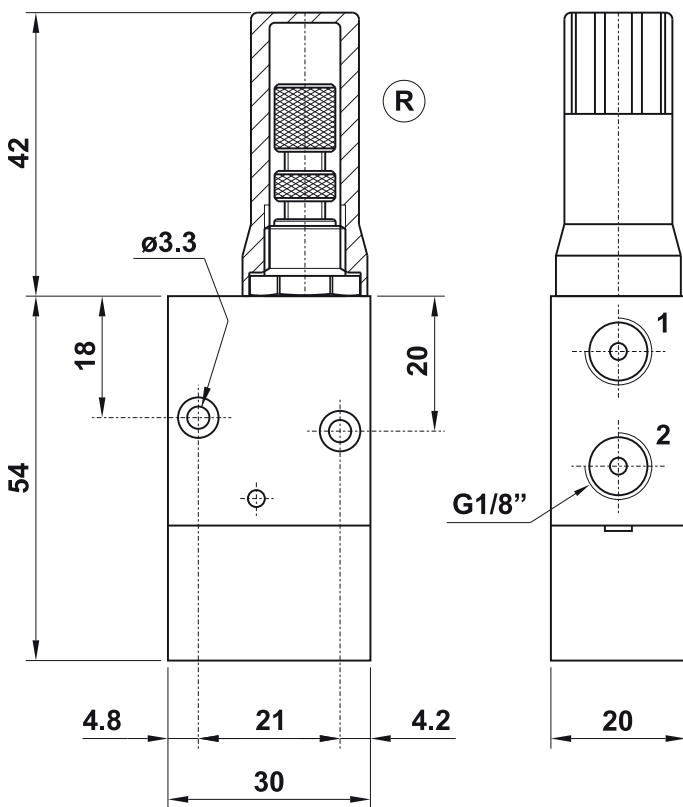
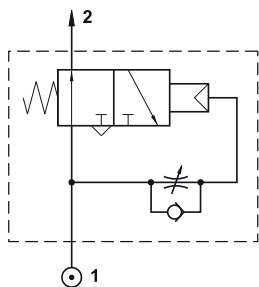
When a signal is applied from a three way valve and maintained at port 1 the impulse generator is activated and will generate an impulse period which was pre-set by screw R.

If the signal is interrupted the duration of the impulse is terminated.

To repeat the cycle the pilot signal must be exhausted and applied again.



**ORDER CODE**  
**10.001.4**



## Materials

Body: aluminium 11S  
Springs: stainless steel  
Seals: NBR  
Internal parts: brass OT58

Ports	G1/8"
Working pressure	2 ... 10 bar 0.2 ... 1 MPa
Temperature range	max +60°C
Time regulation range	0 ... 10 s
Fluid	50µ filtered, lubricated or non lubricated air