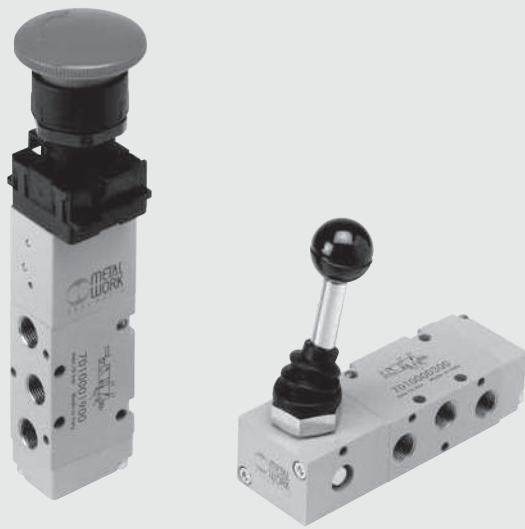


VALVES SERIES 70, HAND OPERATED

| TECHNICAL DATA | | 1/8" | 1/4" | 1/2" |
|-------------------------------|--------------|---------------|--------|--------|
| Operating pressure range: | | | | |
| • version with direct control | bar | Vacuum to 10 | | |
| • pilot-assisted version | bar | 2.5 to 10 | | |
| Operating temperature range | | °C -10 to +60 | | |
| Nominal diameter | | 5 | 7.5 | 15 |
| Conductance C | NI/min · bar | 121.43 | 264.26 | 971.43 |
| Critical ratio b | bar/bar | 0.32 | 0.27 | 0.43 |
| Flow rate at 6 bar ΔP 0.5 bar | NI/min | 400 | 750 | 3200 |
| Flow rate at 6 bar ΔP 1 bar | NI/min | 550 | 1100 | 4600 |

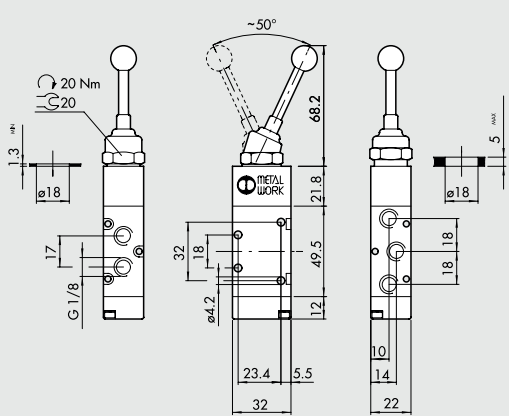


| SYNOPTIC, SIZES AND VERSIONS | | | | | | |
|------------------------------|------------|-----------|---|---------------------------------|---------------------|--|
| M A V | 2 | 3 | PP | S | NC | |
| FAMILY | DIMENSIONS | FUNCTION | OPERATORS 14 | RESETTING (12) | FURTHER DETAILS | |
| MAV manual valves | 2 1/8" | 3 3/2 | PP drawer | A pneumatic/mechanical springs* | NC normally closed | |
| | 3 1/4" | 5 5/2 | VL axial lever | S mechanical springs | NO normally open | |
| | 4 1/2" | 6 5/3 | LE 90° lever | B bistable | OO no indication | |
| | | 8 2 x 3/2 | BRE arranged for manual panel actuators | D differential | CC closed centres | |
| | | | | O stable for 5/3 | OC open centres | |
| | | | | | PC pressure centres | |

*on demand

VALVES SERIES 70, HAND OPERATED, 1/8"

FRONT LEVER 5/2, 1/8"



| Symbol | Code | Abbrev. | Weight [g] |
|--------|------------|---------------|------------|
| | 7010001700 | MAV 25 VLB OO | 156 |

