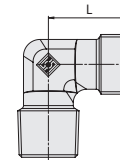
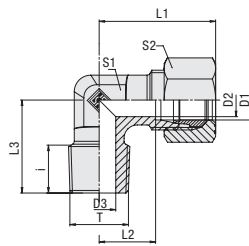


**Male Stud Elbow**  
Type FI-WE-...-Rk ▪ Series LL / L



C

**Ordering Codes**

**\*FI-WE\*-10\*L\*Rk\*-W3\*-MS**

* Male Stud Elbow		<b>FI-WE</b>
* Outside Tube Diameter D1 (in mm)		<b>-10</b>
* Series	Extra-Light Series (page 76)	<b>LL</b>
	Light Series (page 76)	<b>L</b>
	Heavy Series (page 77)	<b>S</b>
* Thread Type	Whitworth Taper Pipe Thread (BSPT)	<b>Rk</b>
If required, please indicate special sizes, e.g. R3/8k!		
* Material Code	Steel, zinc/nickel-plated	<b>-W3</b>
Please contact STAUFF for alternative materials and surface finishings.		
* Design	Made from forging blanks	<b>—</b>
	Made from profile material	<b>PR</b>
* Assembling / Kitting	Fitting body only	<b>—</b>
	Fitting body supplied with cutting ring and union nut	<b>-MS</b>
	Fitting body supplied with soft-sealing cutting ring and union nut	<b>-MSV</b>

**Connecting Parts**

	Cutting Ring Type <b>FI-DS</b>	Page 28
	Soft-Sealing Cutting Ring Type <b>FI-WDDS</b>	Page 29
	Support Sleeve Type <b>FI-VH</b>	Page 31
	STAUFF Form EVO Sealing Ring Type <b>FI-FD</b>	Page 32
	Union Nut Type <b>FI-M</b>	Page 33
	37° Flared Tube Fitting Set Type <b>FI-AB</b>	Page 37

Male threaded studs were designed for female threaded ports in components made of steel. For applications with components made of softer mating materials (e.g. Aluminium), the use of connectors with additionally rolled male threads is recommended.  
Please contact STAUFF prior to the assembly for further information.

**Whitworth Taper Pipe Thread (BSPT)**

Series	Tube OD (mm/in)	PN (bar/psi)	Dimensions (mm/in)										Weight (kg/lbs) ca. per 100	Ordering Codes <sup>3</sup>
			Thread	T	D2	D3	i	L	L1 <sup>1</sup>	L2	L3	S1		
LL	4	100	R 1/8 keg.	3	3	8	15	21	11	17	11	10	1.46	FI-WE-04LLRk-W3-PR
	.16	1450		.12	.12	.31	.59	.83	.43	.67	.43	.39	3.12	
	6	100	R 1/8 keg.	4,5	4,5	8	15	21	9,5	17	11	12	1,73	FI-WE-06LLRk-W3-PR
	.24	1450		.18	.18	.31	.59	.83	.37	.67	.43	.47	3.81	
	8	100	R 1/8 keg.	6	6	8	17	23	11,5	20	12	14	2,63	FI-WE-08LLRk-W3-PR
	.31	1450		.24	.24	.31	.67	.91	.45	.79	.47	.55	5.79	
	10	100	R 1/4 keg.	8	7	12	21,5	27,5	16	26	14	14	9,10	FI-WE-10LLRk-W3
	.39	1450		.31	.28	.47	.85	1.08	.63	1.02	.55	.55	20.02	
	12	100	R 1/4 keg.	10	7	9,9	22	28	16	23	14	17	11,40	FI-WE-12LLRk-W3
	.47	1450		.39	.28	.39	.87	1.10	.63	.91	.55	.67	25.08	
L	6	315	R 1/8 keg.	4	4	8	19	27	12	20	12	14	1,96	FI-WE-06LRk-W3
	.24	4568		.16	.16	.31	.75	1.06	.47	.79	.47	.55	4.32	
	6	315	R 1/4 keg.	4	6	12	21	29	14	25,5	12	14	2,93	FI-WE-06LR1/4k-W3
	.24	4568		.16	.24	.47	.83	1.14	.55	1.00	.47	.55	6.44	
	6	315	R 3/8 keg.	4	9	12	24	31	17	28	14	14	4,42	FI-WE-06LR3/8k-W3
	.24	4568		.16	.35	.47	.94	1.22	.67	1.1	.55	.55	9.74	
	8	315	R 1/8 keg.	6	4	8	21	29	14	26	12	17	2,64	FI-WE-08LR1/8k-W3
	.31	4568		.24	.16	.31	.83	1.14	.55	1.02	.47	.67	5.80	
	8	315	R 1/4 keg.	6	6	12	21	29	14	26	12	17	2,93	FI-WE-08LRk-W3
	.31	4568		.24	.24	.47	.83	1.14	.55	1.02	.47	.67	6.45	
	8	315	R 3/8 keg.	6	9	14	24	32	17	28	14	17	4,34	FI-WE-08LR3/8k-W3
	.31	4568		.24	.35	.55	.94	1.26	.67	1.10	.55	.67	9.54	
	10	315	R 1/8 keg.	8	6	7,3	22,5	29	15,5	20	14	19	2,96	FI-WE-10LR1/8k-W3
	.39	4568		.31	.24	.29	.89	1.14	.61	.79	.55	.75	6.53	
	10	315	R 1/4 keg.	8	7	13	22	30	15	27	14	19	3,53	FI-WE-10LRk-W3
	.39	4568		.31	.28	.51	.87	1.18	.59	1.06	.55	.75	7.76	
	10	315	R 3/8 keg.	8	8	12,5	22	30	15	28	14	19	4,29	FI-WE-10LR3/8k-W3
	.39	4568		.31	.31	.49	.87	1.18	.59	1.10	.55	.75	9.43	
	10	315	R 1/2 keg.	8	11	14	28	35	21	34	19	19	9,56	FI-WE-10LR1/2k-W3
	.39	4568		.31	.43	.55	1.1	1.38	.83	1.34	.75	.75	21.08	
	12	315	R 1/4 keg.	10	7	14,3	24	32	17	27	17	22	4,57	FI-WE-12LR1/4k-W3
	.47	4568		.39	.28	.56	.94	1.26	.67	1.06	.67	.87	10.06	
	12	315	R 3/8 keg.	10	9	13	24	32	17	28,5	17	22	5,33	FI-WE-12LRk-W3
	.47	4568		.39	.35	.51	.94	1.26	.67	1.12	.67	.87	11.72	
	12	315	R 1/2 keg.	10	10	14	28	36	21	34	19	22	9,94	FI-WE-12LR1/2k-W3
	.47	4568		.39	.39	.55	1.10	1.42	.83	1.34	.75	.87	21.87	
	15	315	R 3/8 keg.	12	9	14	28	36	21	34	19	27	8,79	FI-WE-15LR3/8k-W3
	.59	4568		.47	.35	.55	1.10	1.42	.83	1.34	.75	1.06	19.33	
	15	315	R 1/2 keg.	12	12	16	28	36	21	34	19	27	9,12	FI-WE-15LRk-W3
	.59	4568		.47	.47	.63	1.10	1.42	.83	1.34	.75	1.06	20.06	
15	315	R 3/4 keg.	12	12	17	33	40	26	36	24	27	4,05	FI-WE-15LR3/4k-W3	
.59	4568		.47	.47	.67	1.3	1.57	1.02	1.42	.94	1.06	8.93		
18	315	R 1/2 keg.	15	14	17,5	31	40	23,5	36	24	32	11,63	FI-WE-18LRk-W3	
.71	4568		.59	.55	.69	1.22	1.57	.93	1.42	.94	1.26	25.58		
18	315	R 3/4 keg.	15	16	16	31	41,5	23,5	36	27	32	13,2	FI-WE-18LR3/4k-W3	
.71	4568		.59	.63	.63	1.22	1.63	.93	1.42	1.06	1.26	29.10		
22	160	R 3/4 keg.	19	18	17	35	44	28,5	42,5	27	36	16,80	FI-WE-22LRk-W3	
.87	2320		.75	.71	.67	1.38	1.73	1.12	1.67	1.06	1.42	36.96		
28	160	R 1 keg.	24	23	20	38	47	30,5	48	36	41	30,7	FI-WE-28LRk-W3	
1.1	2320		.94	.91	.79	1.5	1.85	1.20	1.89	1.42	1.61	67.68		
35	160	R 1 1/4 keg.	30	30	20	48	59	37,5	51	41	50	46,7	FI-WE-35LRk-W3	
1.38	2320		1.18	1.18	.79	1.89	2.32	1.48	2.01	1.61	1.97	102.96		
42	160	R 1 1/2 keg.	36	36	20	54	59	43	61	50	60	72,3	FI-WE-42LRk-W3	
1.65	2320		1.42	1.42	.79	2.13	2.32	1.69	2.4	1.97	2.36	159.39		

<sup>1</sup> Approximate dimension in assembled condition.

<sup>2</sup> Weight excluding cutting ring and union nut.

<sup>3</sup> Standard scope of delivery: Fitting body only.

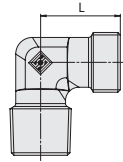
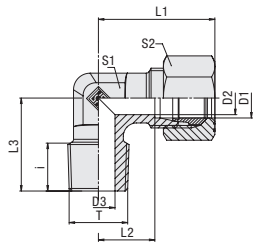
Male stud acc. to DIN 3852-2 (Form C)

Port acc. to DIN 3852-2 (Form Z)

Suitable liquid / plastic sealant required.



Male Stud Elbow  
Type FI-WE-...-Rk ▪ Series S



C

Whitworth Taper Pipe Thread (BSPT)

Series	Tube OD PN		Dimensions											Weight (kg/lbs) ca. per 100	Ordering Codes <sup>3</sup>
	(mm/in)	(bar/psi)	Thread	T	D2	D3	i	L	L1 <sup>1</sup>	L2	L3	S1	S2		
S	6	400	R 1/4 keg.	4	4	12	23	31	16	26	12	17	5,73	FI-WE-06SRk-W3	
	.24	5800		.16	.16	.47	.91	1.22	.63	1.02	.47	.67	12.60		
	8	400	R 1/4 keg.	5	5	13	24	32	17	27	14	19	4,70	FI-WE-08SRk-W3	
	.31	5800		.20	.20	.51	.94	1.26	.67	1.06	.55	.75	10.34		
	10	400	R 1/4 keg.	7	5	13	25	34	17,5	28	17	22	5,94	FI-WE-10SR1/4k-W3	
	.39	5800		.28	.20	.51	.98	1.34	.69	1.10	.67	.87	13.06		
	10	400	R 3/8 keg.	7	7	13	25	34	17,5	28	17	22	6,71	FI-WE-10SRk-W3	
	.39	5800		.28	.28	.51	.98	1.34	.69	1.10	.67	.87	14.77		
	10	400	R 1/2 keg.	7	7	13	30	38	22,5	32	19	22	11,67	FI-WE-10SR1/2k-W3	
	.39	5800		.28	.28	.51	1.18	1.50	.89	1.26	.75	.87	25.73		
	12	400	R 3/8 keg.	8	7	12	29	38	21,5	28	17	24	7,78	FI-WE-12SRk-W3	
	.47	5800		.31	.28	.47	1.14	1.50	.85	1.10	.67	.94	17.12		
	12	400	R 1/2 keg.	8	10	14	30	39	22,5	32	19	24	4,67	FI-WE-12SR1/2k-W3	
	.47	5800		.31	.39	.55	1.18	1.54	.89	1.26	.75	.94	10.27		
	14	400	R 3/8 keg.	10	8	14	30	40	22	32	19	27	9,62	FI-WE-14SR3/8k-W3	
	.55	5800		.39	.31	.55	1.18	1.57	.87	1.26	.75	1.06	14.59		
	14	400	R 1/2 keg.	10	10	14	30	40	22	32	19	27	10,53	FI-WE-14SRk-W3	
	.55	5800		.39	.39	.55	1.18	1.57	.87	1.26	.75	1.06	23.17		
	16	400	R 1/2 keg.	12	12	14	34	44	25,5	32	24	30	13,60	FI-WE-16SRk-W3	
	.63	5800		.47	.47	.55	1.34	1.73	1.00	1.26	17.8	66.0	29.92		
	16	400	R 3/4 keg.	12	12	14	34	44	25,5	32	24	30	22,00	FI-WE-16SR3/4k-W3	
	.63	5800		.47	.47	.55	1.34	1.73	1.00	1.26	.94	1.18	48.40		
	20	400	R 1/2 keg.	16	10	14	37	48	26,5	42	27	36	21,00	FI-WE-20SR1/2k-W3	
	.79	5800		.63	.39	.55	1.46	1.89	1.04	1.65	1.06	1.42	46.20		
	20	250	R 3/4 keg.	16	16	17	39	48	26,5	42	27	36	21,19	FI-WE-20SRk-W3	
	.79	3625		.63	.63	.67	1.54	1.89	1.04	1.65	1.06	1.42	46.72		
	25	250	R 3/4 keg.	20	16	17	42	53	30	48	36	46	37,27	FI-WE-25SR3/4k-W3	
	.98	3625		.79	.63	.67	1.65	2.09	1.18	1.89	1.42	1.81	82.17		
	25	250	R 1 keg.	20	20	20	42	53	30	48	36	46	39,3	FI-WE-25SRk-W3	
	.98	3625		.79	.79	.79	1.65	2.09	1.18	1.89	1.42	1.81	86.64		
	30	250	R 1 1/4 keg.	25	25	20	52	62	35,5	54	41	50	62,61	FI-WE-30SRk-W3	
	1.18	3625		.98	.98	.79	2.05	2.44	1.4	2.13	1.61	1.97	138.03		
	38	250	R 1 1/2 keg.	32	32	20	52	71	41	61	50	60	93,8	FI-WE-38SRk-W3	
	1.50	3625		1.26	1.26	.79	2.05	2.80	1.61	2.40	1.97	2.36	206.80		

<sup>1</sup> Approximate dimension in assembled condition.  
<sup>2</sup> Weight excluding cutting ring and union nut.  
<sup>3</sup> Standard scope of delivery: Fitting body only.

Male stud acc. to DIN 3852-2 (Form C)  
 Port acc. to DIN 3852-2 (Form Z)

Suitable liquid / plastic sealant required.

Ordering Codes

\*FI-WE\*-10\*S\*Rk\*-W3\*-MS

* Male Stud Elbow	FI-WE
* Outside Tube Diameter D1 (in mm)	-10
* Series	Extra-Light Series (page 76) LL Light Series (page 76) L Heavy Series (page 77) S
* Thread Type	Whitworth Taper Pipe Thread (BSPT) Rk
If required, please indicate special sizes, e.g. R3/8k!	
* Material Code	Steel, zinc/nickel-plated -W3
Please contact STAUFF for alternative materials and surface finishings.	
* Assembling / Kitting	Fitting body only —
	Fitting body supplied with cutting ring and union nut -MS
	Fitting body supplied with soft-sealing cutting ring and union nut -MSV

Connecting Parts

	Cutting Ring Type FI-DS	Page 28
	Soft-Sealing Cutting Ring Type FI-WDDS	Page 29
	Support Sleeve Type FI-VH	Page 31
	STAUFF Form EVO Sealing Ring Type FI-FD	Page 32
	Union Nut Type FI-M	Page 33
	37° Flared Tube Fitting Set Type FI-AB	Page 37

Male threaded studs were designed for female threaded ports in components made of steel. For applications with components made of softer mating materials (e.g. Aluminium), the use of connectors with additionally rolled male threads is recommended.  
 Please contact STAUFF prior to the assembly for further information.

