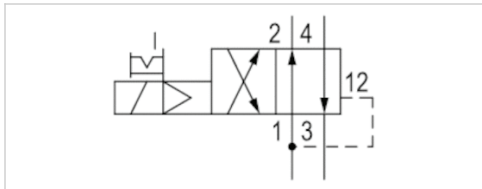






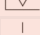


4/2-directional valve, Series 840

- Qn = 200 l/min
- Pilot valve width : 22.5 mm
- Pipe connection
- Compressed air connection output : Ø6x1
- Electrical connection : Plug, EN 175301-803, form C
- Manual override : with detent
- single solenoid
- with air spring return
- Pilot : internal



Version	Diaphragm poppet valve
Activation	Electrically
Pilot	internal
Sealing principle	Soft sealing
Working pressure min./max.	1,5 ... 10 bar
Control pressure min./max.	1,5 ... 10 bar
Ambient temperature min./max.	-15 ... 50 °C
Medium temperature min./max.	-15 ... 50 °C
Medium	Compressed air
Max. particle size	50 µm
Oil content of compressed air	0 ... 1 mg/m ³
Nominal flow Qn	200 l/min
Connector standard	EN 175301-803, form C
Protection class with connection	IP65
Reverse polarity protection	Protected against polarity reversal
Duty cycle	100 %
Typ. switch-on time	12 ms
Typ. switch-off time	12 ms
Mounting on manifold strip	PRS strip
Weight	See table below

Technical data

Part No.	MO	Compressed air connection	
		Input	Output
5728400410		Ø6x1	Ø6x1
5728400420		Ø6x1	Ø6x1
5728400620		Ø6x1	Ø6x1
5728405420		Ø6x1	Ø6x1
5728405470		Ø6x1	Ø6x1
5728405480		Ø6x1	Ø6x1
5728405680		Ø6x1	Ø6x1

Part No.	Compressed air connection		Operationalvoltage
	Exhaust	Pilot Exhaust	DC
5728400410	Ø6x1	Ø 4,5	12 V
5728400420	Ø6x1	Ø 4,5	24 V
5728400620	Ø6x1	Ø 4,5	24 V
5728405420	Ø6x1	Ø 4,5	-
5728405470	Ø6x1	Ø 4,5	-
5728405480	Ø6x1	Ø 4,5	-
5728405680	Ø6x1	Ø 4,5	-

Part No.	Operationalvoltage		Voltage tolerance	
	AC 50 Hz	AC 60 Hz	DC	AC 50 Hz
5728400410	-	-	-10% / +10%	-
5728400420	-	-	-10% / +10%	-
5728400620	-	-	-10% / +10%	-
5728405420	24 V	24 V	-	-10% / +15%
5728405470	110 V	110 V	-	-10% / +15%
5728405480	230 V	230 V	-	-10% / +15%
5728405680	230 V	230 V	-	-10% / +15%

Part No.	Power consumption		Holding power	
	AC 60 Hz	DC	AC 50 Hz	AC 60 Hz
5728400410	-	1,6 W	-	-
5728400420	-	1,6 W	-	-
5728400620	-	1,6 W	-	-
5728405420	-10% / +15%	-	2,2 VA	1,9 VA
5728405470	-10% / +15%	-	2,2 VA	1,9 VA
5728405480	-10% / +15%	-	2,3 VA	2 VA
5728405680	-10% / +15%	-	2,5 VA	2,2 VA

Part No.	Switch-on power		LED status display	Weight
	AC 50 Hz	AC 60 Hz		
5728400410	-	-	-	0,096 kg
5728400420	-	-	-	0,097 kg
5728400620	-	-	Red	0,097 kg
5728405420	3 VA	2,6 VA	-	0,095 kg
5728405470	3,1 VA	2,6 VA	-	0,096 kg
5728405480	3,2 VA	2,8 VA	-	0,095 kg
5728405680	3,5 VA	3 VA	Red	0,095 kg

Nominal flow Q_n at 6 bar and $\Delta p = 1$ bar, MO = Manual override

Technical information

The min. control pressure must be adhered to, since otherwise faulty switching and valve failure may result!
 The pressure dew point must be at least 15 °C under ambient and medium temperature and may not exceed 3 °C .
 The oil content of compressed air must remain constant during the life cycle.
 Use only the approved oils from AVENTICS. Further information can be found in the "Technical information" document (available in the MediaCentre).

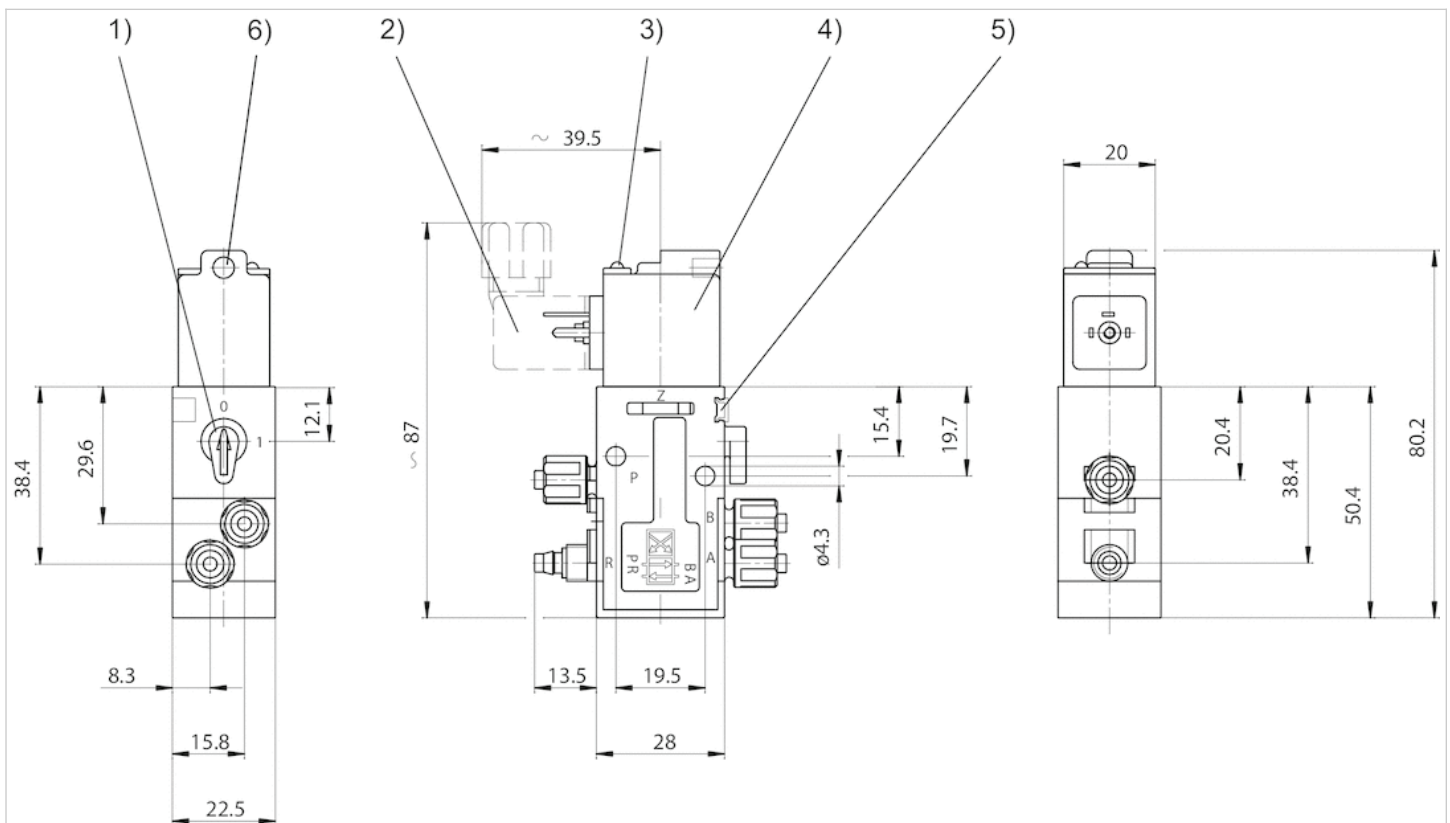
Versions with voltage of less than 50 V DC do not have a protective ground.
 The maximum operating pressure depends on the ambient temperature. The following values are applicable - 15 °C ... 50 °C =
 Operating pressure 1.5 bar ... 8 bar possible- 15 °C ... 40 °C = Operating pressure 1.5 bar ... 10 bar possible.

Technical information

Material	
Housing	Polyoxymethylene
Seals	Acrylonitrile butadiene rubber

Dimensions

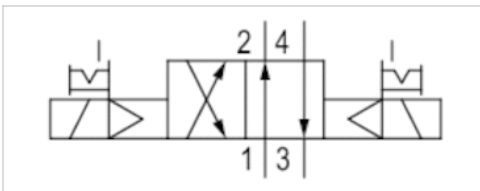
Dimensions



1) Manual override 2) Valve plug connector 3) LED display 4) Coil can be rotated at 180° intervals 5) Mounting space for name plate 6) Hole for M5 fitting or silencer \varnothing 4.5 mm





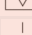
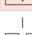

4/2-directional valve, Series 840

- Qn = 200 l/min
- Pilot valve width : 22.5 mm
- Pipe connection
- Compressed air connection output : Ø6x1
- Electrical connection : Plug, EN 175301-803, form C
- Manual override : with detent
- Double solenoid
- Pilot : internal



Version	Diaphragm poppet valve
Activation	Electrically
Pilot	internal
Sealing principle	Soft sealing
Working pressure min./max.	1,8 ... 10 bar
Control pressure min./max.	1,8 ... 10 bar
Ambient temperature min./max.	-15 ... 50 °C
Medium temperature min./max.	-15 ... 50 °C
Medium	Compressed air
Max. particle size	50 µm
Oil content of compressed air	0 ... 1 mg/m ³
Nominal flow Qn	200 l/min
Connector standard	EN 175301-803, form C
Protection class with connection	IP65
Reverse polarity protection	Protected against polarity reversal
Duty cycle	100 %
Typ. switch-on time	12 ms
Typ. switch-off time	12 ms
Mounting on manifold strip	PRS strip
Weight	See table below

Technical data

Part No.	MO	Compressed air connection	
		Input	Output
5728410410		Ø6x1	Ø6x1
5728410420		Ø6x1	Ø6x1
5728410620		Ø6x1	Ø6x1
5728415420		Ø6x1	Ø6x1
5728415470		Ø6x1	Ø6x1
5728415480		Ø6x1	Ø6x1
5728415680		Ø6x1	Ø6x1

Part No.	Compressed air connection		Operationalvoltage
	Exhaust	Pilot Exhaust	DC
5728410410	Ø6x1	Ø 4,5	12 V
5728410420	Ø6x1	Ø 4,5	24 V
5728410620	Ø6x1	Ø 4,5	24 V
5728415420	Ø6x1	Ø 4,5	-
5728415470	Ø6x1	Ø 4,5	-
5728415480	Ø6x1	Ø 4,5	-
5728415680	Ø6x1	Ø 4,5	-

Part No.	Operationalvoltage		Voltage tolerance	
	AC 50 Hz	AC 60 Hz	DC	AC 50 Hz
5728410410	-	-	-10% / +10%	-
5728410420	-	-	-10% / +10%	-
5728410620	-	-	-10% / +10%	-
5728415420	24 V	24 V	-	-10% / +15%
5728415470	110 V	110 V	-	-10% / +15%
5728415480	230 V	230 V	-	-10% / +15%
5728415680	230 V	230 V	-	-10% / +15%

Part No.	Power consumption		Holding power	
	AC 60 Hz	DC	AC 50 Hz	AC 60 Hz
5728410410	-	1,6 W	-	-
5728410420	-	1,6 W	-	-
5728410620	-	1,6 W	-	-
5728415420	-10% / +15%	-	2,1 VA	1,9 VA
5728415470	-10% / +15%	-	2,2 VA	1,9 VA
5728415480	-10% / +15%	-	2,3 VA	2 VA
5728415680	-10% / +15%	-	2,5 VA	2,2 VA

Part No.	Switch-on power		LED status display	Weight
	AC 50 Hz	AC 60 Hz		
5728410410	-	-	-	0,156 kg
5728410420	-	-	-	0,157 kg
5728410620	-	-	Red	0,158 kg
5728415420	3 VA	2,6 VA	-	0,153 kg
5728415470	3,1 VA	2,6 VA	-	0,157 kg
5728415480	3,2 VA	2,8 VA	-	0,156 kg
5728415680	3,5 VA	3 VA	Red	0,16 kg

Nominal flow Qn at 6 bar and $\Delta p = 1$ bar, MO = Manual override

Technical information

The min. control pressure must be adhered to, since otherwise faulty switching and valve failure may result!

The pressure dew point must be at least 15 °C under ambient and medium temperature and may not exceed 3 °C .

The oil content of compressed air must remain constant during the life cycle.

Use only the approved oils from AVENTICS. Further information can be found in the "Technical information" document (available in the MediaCentre).

Versions with voltage of less than 50 V DC do not have a protective ground.

The maximum operating pressure depends on the ambient temperature. The following values are applicable:- 15 °C ... 50 °C :

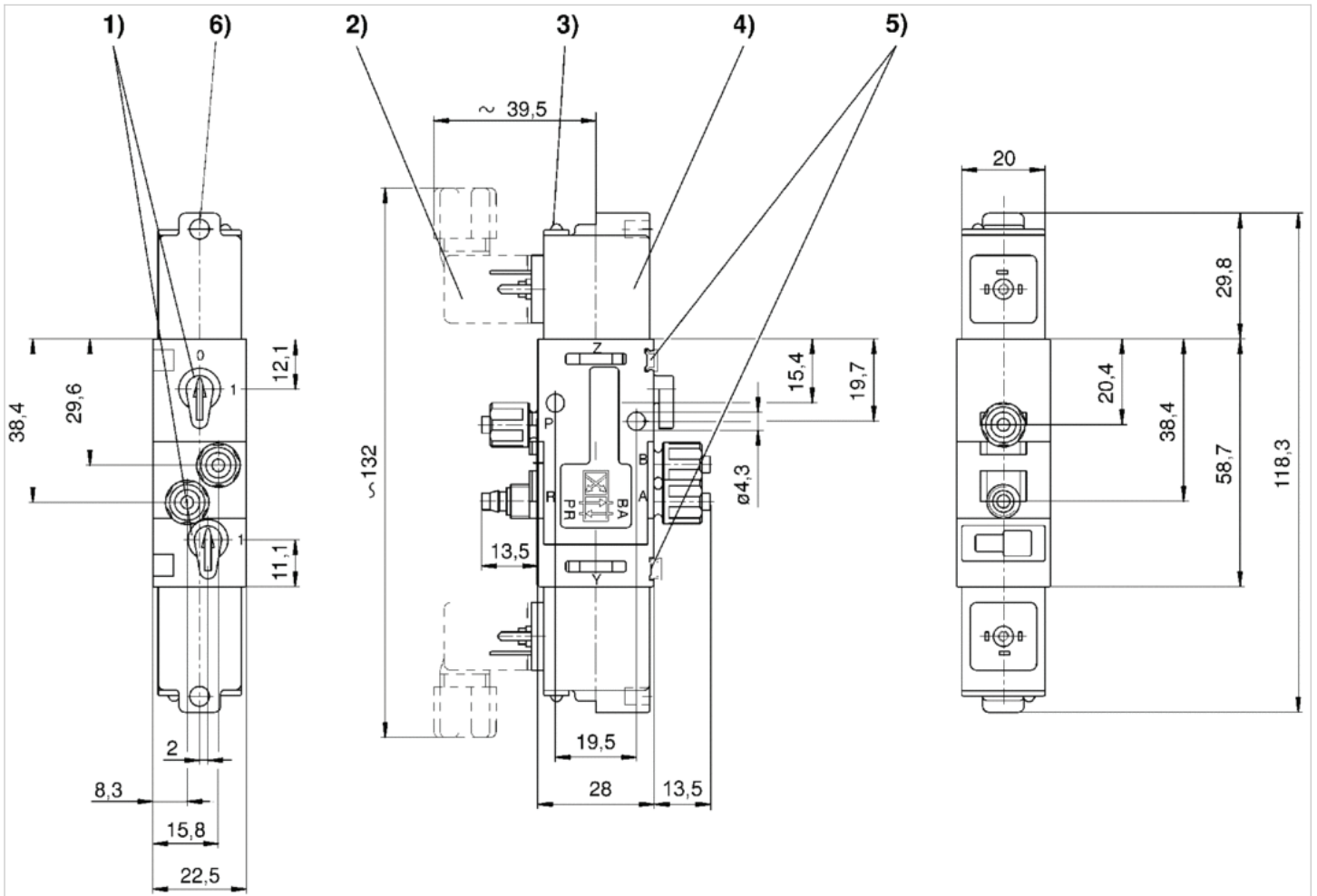
Operating pressure 1.8 bar ... 8 bar possible.- 15 °C ... 40 °C : Operating pressure 1.8 bar ... 10 bar possible.

Technical information

Material	
Housing	Polyoxymethylene
Seals	Acrylonitrile butadiene rubber

Dimensions

Dimensions



1) Manual override 2) Valve plug connector 3) LED display 4) Coil can be rotated at 180° intervals 5) Mounting space for name plate 6) Hole for M5 fitting or silencer Ø 4.5 mm