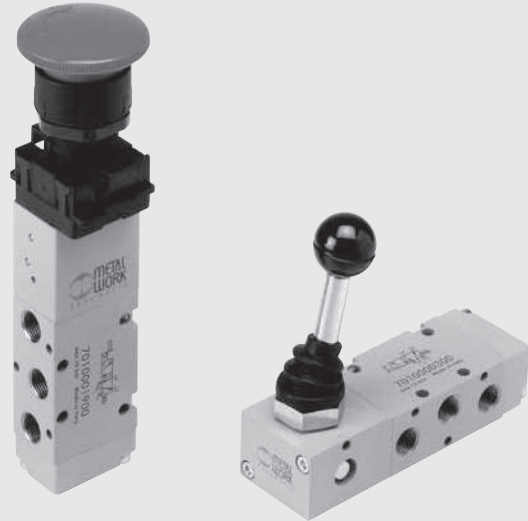


VALVES SERIES 70, HAND OPERATED

TECHNICAL DATA		1/8"	1/4"	1/2"
Operating pressure range:		Vacuum to 10		
• version with direct control	bar	2.5 to 10		
• pilot-assisted version	bar	-10 to +60		
Operating temperature range		°C		
Nominal diameter	mm	5	7.5	15
Conductance C	NI/min · bar	121.43	264.26	971.43
Critical ratio b	bar/bar	0.32	0.27	0.43
Flow rate at 6 bar ΔP 0.5 bar	NI/min	400	750	3200
Flow rate at 6 bar ΔP 1 bar	NI/min	550	1100	4600

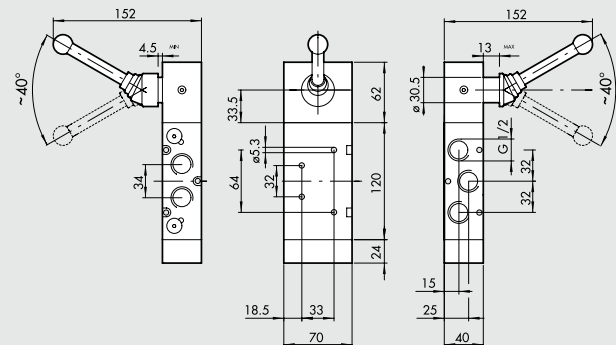


SYNOPTIC, SIZES AND VERSIONS						
M A V	2	3	PP	S	NC	
FAMILY	DIMENSIONS	FUNCTION	OPERATORS 14	RESETTING (12)	FURTHER DETAILS	
MAV manual valves	2 1/8"	3 3/2	PP drawer	A pneumatic/mechanical springs*	NC normally closed	
	3 1/4"	5 5/2	VL axial lever	S mechanical springs	NO normally open	
	4 1/2"	6 5/3	LE 90° lever	B bistable	OO no indication	
		8 2 x 3/2	BRE arranged for manual panel actuators	D differential	CC closed centres	
				O stable for 5/3	OC open centres	
					PC pressure centres	

*on demand

VALVES SERIES 70, HAND OPERATED, 1/2"

90° LEVER 5/2, 1/2"



Symbol	Code	Abbrev.	Weight [g]
	7030000300	MAV 45 LES OO	1588
	7030000400	MAV 45 LEB OO	1630