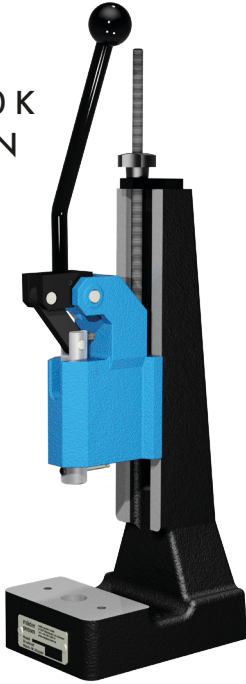
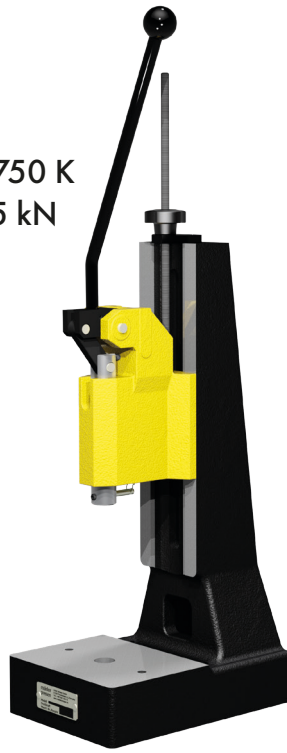


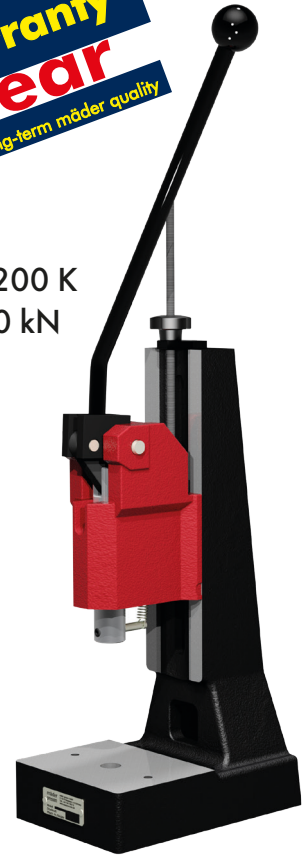
CL 500 K
5.0 kN



CL 750 K
7.5 kN



CL 1200 K
12.0 kN



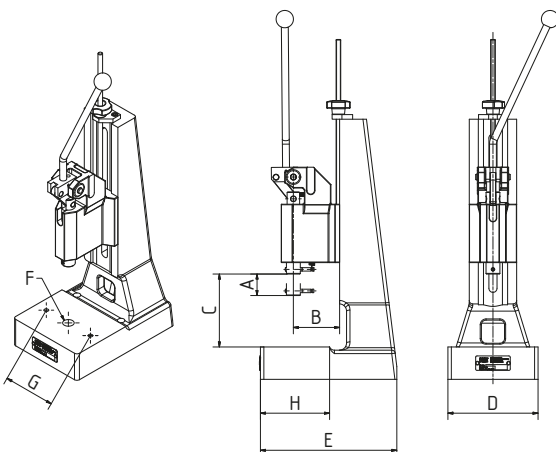
Type			CL 500 K	CL 750 K	CL 1200 K
Capacity	kN		5.0	7.5	12.0
Working stroke	mm	A	40	40	44
Throat	mm	B	63	80	80
Daylight	mm	C	40-210	50-260	53-230
Table size	mm	DxH	110x60	157x115	157x115
Table bore Ø	mm	F	20	20	20
Fixing holes			2 x M 8	2 x M 10	2 x M 10
Hole pitch	mm	G	66	108	108
Ram bore Ø x Depth	mm		10 ^{H7} x 25	10 ^{H7} x 25	10 ^{H7} x 30
Ram Ø			20	24	30
Required space	mm	DxE	110x160	157x237	157x237
Weight	ca. kg		8.5	21	24

Toggle presses only produce their full force 1 mm before the end of the stroke.

The advantages:

- **Height adjustment of press head**
by threaded spindle
- **High output power** with moderate input force
- **Accuracy** thanks to precise ram guidance
- **Accurately machined press table** with
2 tool-fixing threads
- **Highly versatile table bore**

Ideal for rational assembly, embossing, punching, riveting, bending and forming.



* When used appropriately
Excludes wearing parts (springs)