

# Dual Pressure Valve

## Valve operation

This two way valve offers two pressure settings at the user port: system pressure or regulated pressure (0-3 bar) by adjusting screw **R**.

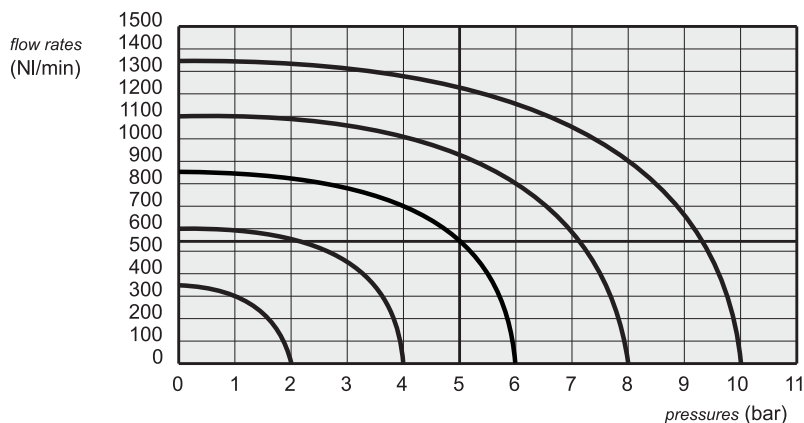
A three way directional control valve must be fitted downstream of this valve if the circuit is required to exhaust.

The regulated pressure can be read by connecting a manometer at point **M**.

The valve is available either electrically or pneumatically operated, "normally closed".

### NORMALLY CLOSED

Without signal at point **X** the output is regulated pressure.



### ORDER CODES

	<i>norm. closed</i>
<i>solenoid</i>	<b>00.008.3</b>
<i>pneumatic</i>	<b>00.047.4</b>

Ports	G1/8"
Working pressure	2.5 ... 10 bar 0.25 ... 1 MPa
Minimum pressure of signal <b>X</b>	2 bar 0.2 MPa
Adjustable pressure range (screw <b>R</b> )	0 ... 3 bar 0 ... 0.3 MPa
Temperature range	max +60°C
Fluid	50µ filtered, lubricated or non lubricated air

### Materials

**Body:** aluminium 11S

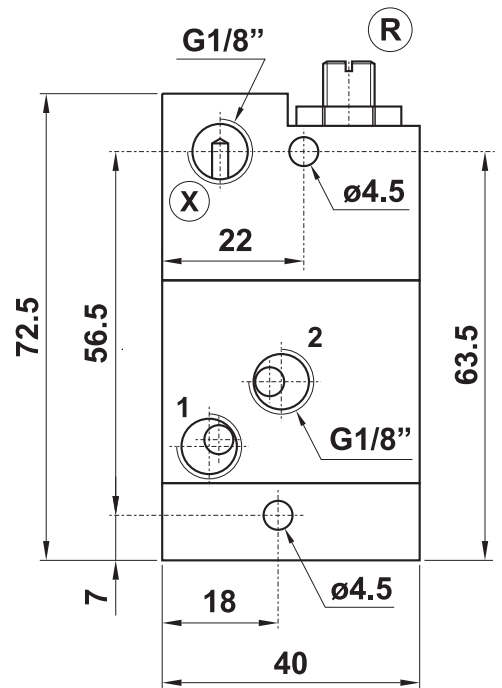
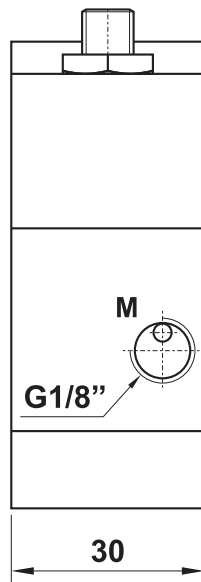
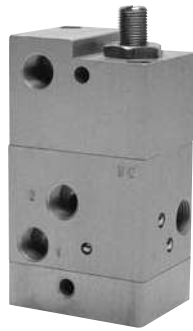
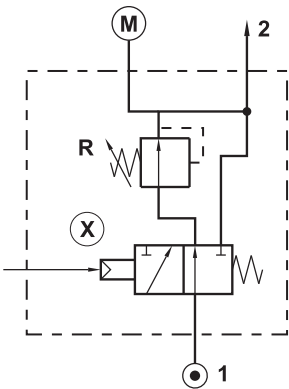
**Springs:** stainless steel

**Seals:** NBR

**Spool:** nickel plated aluminium

**Internal parts:** brass OT58

**00.047.4**



**00.008.3**

*The product is sold without coil, which is bought separately (refer to page 357).*

