

IN-LINE PRESSURE GAUGE SERIES MAN L

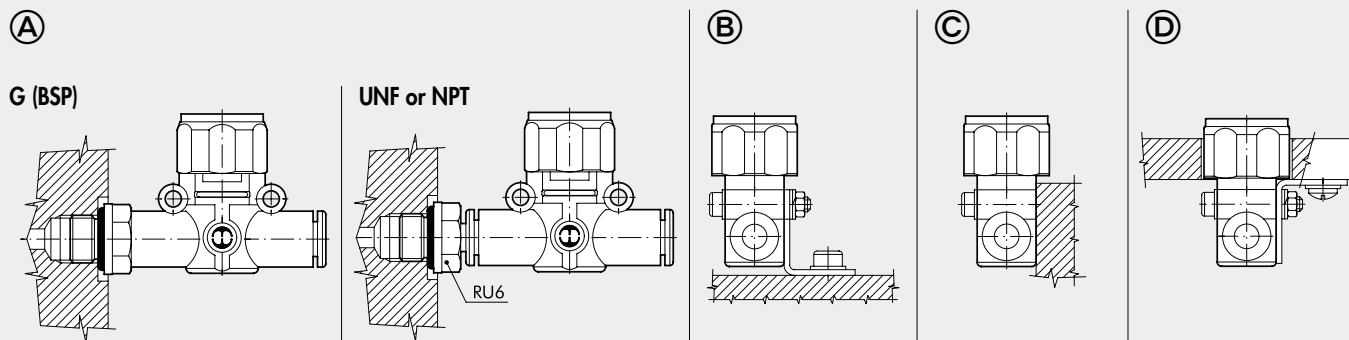
The MAN L pressure gauge belongs to the LINE ON LINE® family, which means it can be connected to all the other components in series or in parallel.

Available in the version for pipe-pipe connection with two push-in fittings, and in the version for thread-pipe connection with a brass nickel-plated male thread and a push-in fitting.

Though small in size, this pressure gauge, which is supplied in a metal casing, ensures accurate reading. It can be angled in any direction simply by rotating manually.

[illegible]

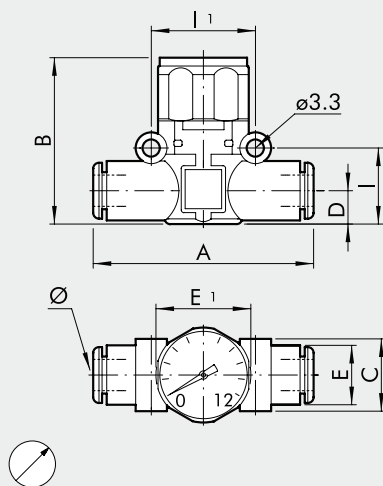
ASSEMBLY OPTIONS



How to mount the MAN L:

- Fig. ④ **G (BSP):** With the male threaded port it is possible to mount the MAN L straight onto the female thread.
UNF or NPT: Adding a RU6 fitting, with his male UNF or NPT thread, it is possible to mount the MAL L straight on to the actuator or the control valve.
- Fig. ⑤ Fixing to the plate with the special SQU L bracket.
- Fig. ⑥ There are two robust rings on the plastic body for fixing the MAN L straight onto the wall.
- Fig. ⑦ Use the SQL L bracket for panel mounting the MAN L.

MAN L PIPE - PIPE



Code	Ref.	Ø	A	B	C	D	E	E1	I	II
9067001	MAN L Ø4-Ø4	4 ▲	41.8	36.1	10.7	5.6	10	23	12.8	16
9067016	MAN L Ø6-Ø6	6	49.4	35	14.7	6.4	11.4	23	14.6	20
9067016U	MAN L Ø1/4-Ø1/4	1/4	49.4	35	14.7	6.4	11.4	23	14.6	20
9067024	MAN L Ø8-Ø8	8 ▲	57.3	41	18.7	9.1	13.8	23	18.7	24

▲ Ø4 = Ø5/32"; Ø8 = Ø5/16"