

# microvalvole

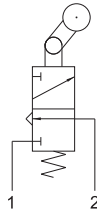
microvalves



## 304 MS

3/2 NC raccordi automatici per tubo  $\varnothing 4$  (sotto),  
leva unidirezionale

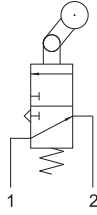
3/2 NC push-in fittings for  $\varnothing 4$  tube (ports on the bottom),  
uni-directional lever



## 314 MS

3/2 NA raccordi automatici per tubo  $\varnothing 4$  (sotto),  
leva unidirezionale

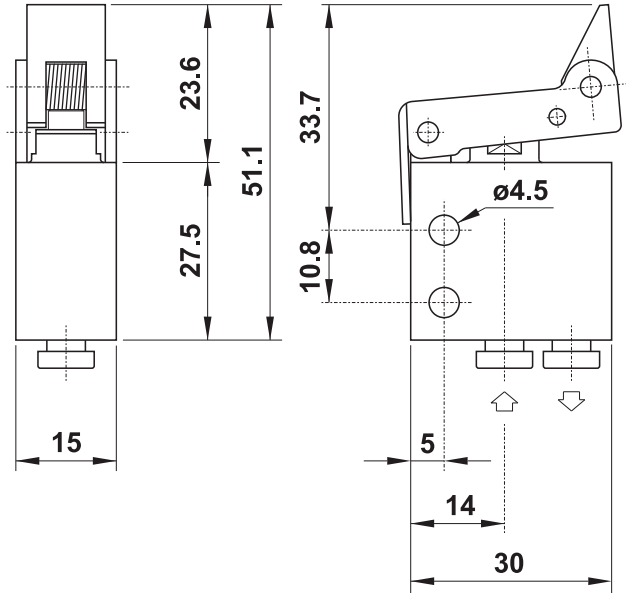
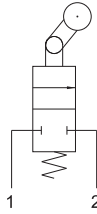
3/2 NO push-in fittings for  $\varnothing 4$  tube (ports on the bottom),  
uni-directional lever



## 204 MS

2/2 NC raccordi automatici per tubo  $\varnothing 4$  (sotto),  
leva unidirezionale

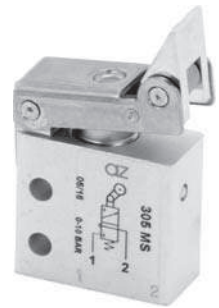
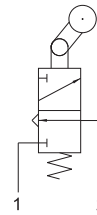
2/2 NC push-in fittings for  $\varnothing 4$  tube (ports on the bottom),  
uni-directional lever



## 305 MS

3/2 NC attacchi filettati M5 (sotto),  
leva unidirezionale

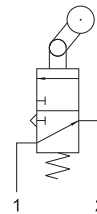
3/2 NC M5 threaded ports (on the bottom),  
uni-directional lever



## 315 MS

3/2 NA attacchi filettati M5 (sotto),  
leva unidirezionale

3/2 NO M5 threaded ports (on the bottom),  
uni-directional lever



## 205 MS

2/2 NC attacchi filettati M5 (sotto),  
leva unidirezionale

2/2 NC M5 threaded ports (on the bottom),  
uni-directional lever

