

**Vacuum Cups**  
Flat Concave

Code D20	Model	50 -kPA @ BSP Vacuum Level	DIM. A mm	DIM. B mm	DIM. C mm	DIM. D mm	Fitting Style
0202096	VL20FC	10	Ø20.0	15.0	Ø6	9	A
0202097	VL25FC	17	Ø25.0	15.8	Ø6	9	A
0202099	VL30FC	23	Ø30.0	17.5	Ø6	9	A
0202100	VL40FC	38	Ø40.0	27.0	Ø10	15	B
0202101	VL50FC	58	Ø50.0	29.0	Ø10	15	B
0202102	VL60FC	79	Ø60.0	35.5	Ø12	18	C
0202103	VL75FC	113	Ø75.0	38.5	Ø12	18	C



**Vacuum Cups**  
with Short Bellows

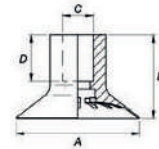
Code D20	Model	50 -kPA @ BSP Vacuum Level	DIM. A mm	DIM. B mm	DIM. C mm	DIM. D mm	Fitting Style
0202109	VL20BX	7	Ø20.0	19.5	Ø6	9	A
0202110	VL25BX	12	Ø25.0	22.3	Ø6	9	A
0202111	VL030X	16	Ø30.0	25.6	Ø6	9	A
0202113	VL40BX	29	Ø40.0	36.3	Ø10	15	B
0202114	VL50BX	44	Ø50.0	43.6	Ø10	15	B
0202115	VL60BX	60	Ø58.0	52.2	Ø12	18	C
0202116	VL75BX	89	Ø71.7	61.2	Ø12	18	C

**Vacuum Cups**  
with Long Bellows

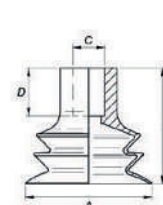
Code D20	Model	50 -kPA @ BSP Vacuum Level	DIM. A mm	DIM. B mm	DIM. C mm	DIM. D mm	Fitting Style
0202117	VL20BL	6	Ø20.0	27.9	Ø6	9	A
0202118	VL25BL	11	Ø25.0	33.5	Ø6	9	A
0202119	VL30BL	15	Ø30.0	37.9	Ø6	9	A
0202120	VL40BL	23	Ø40.0	53.1	Ø10	15	B
0202121	VL50BL	35	Ø50.0	62.5	Ø10	15	B
0202122	VL60BL	48	Ø60.0	76.3	Ø12	18	C
0202123	VL75BL	76	Ø60.0	75.0	Ø12	18	C

**Technical Data**

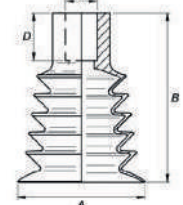
- Suction cup program suitable for standard applications, such as carton and cardboard erecting (low to medium speed), metal/wood sheet loading and unloading, parts removal from injection molding machines and clamping/holding.
- Durable material with good wear resistance.
- Thin sealing lip gives good grip even on slightly textured and corrugated surfaces.
- Available with metal fitting or push-on directly to a pipe.
- Every cup size has a few fitting options.



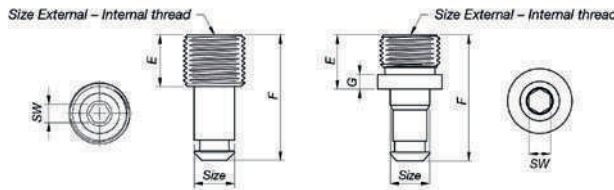
Flat Concave



Short Bellows



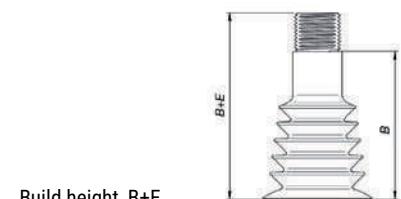
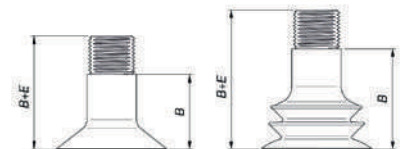
Long Bellows



**Fittings**

BSP

Code D20	BSP Threads		DIA mm	DIM. E mm	DIM. F mm	DIM. G mm	SW mm	Fitting Style
	Internal	External						
0202156	G1/8"	M5	Ø6	11	23	3	3	A
0202157	G1/4"	G1/8"	Ø6	14	26	3	3	A
0202158	G1/4"	G1/8"	Ø10	15	35	4	6	B
0202159	G1/4"	G1/8"	Ø12	15	40	4	6	C
0202164	G3/8"	G1/4"	Ø10	15	35	4	6	B
0202165	G3/8"	G1/4"	Ø12	15	40	4	6	C



Build height, B+E