

# IN-LINE SHUTOFF VALVE SERIES V2V L AND V3V L

V2V L and V3V L shutoff valves belong to the LINE ON LINE® family which means they can be connected to all the other components in series or in parallel. Available in the version for pipe-pipe connection with two push-in fittings, and in the version for thread-pipe connection with a brass nickel-plated male thread and a push-in fitting.

V2V is a two-way unidirectional valve, while V3V is a three-way valve with free discharge in the area around the control knob.

The locked version is probably the smallest available on the market.

A lock is provided to ensure the valve is kept in the closed position during machine maintenance. The valve is supplied complete with a lock and two keys.

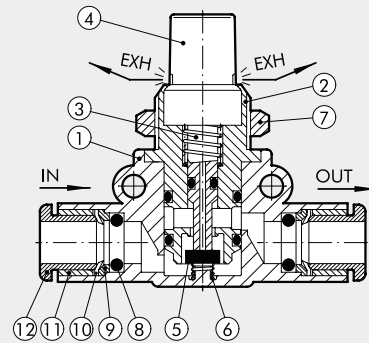


## TECHNICAL DATA

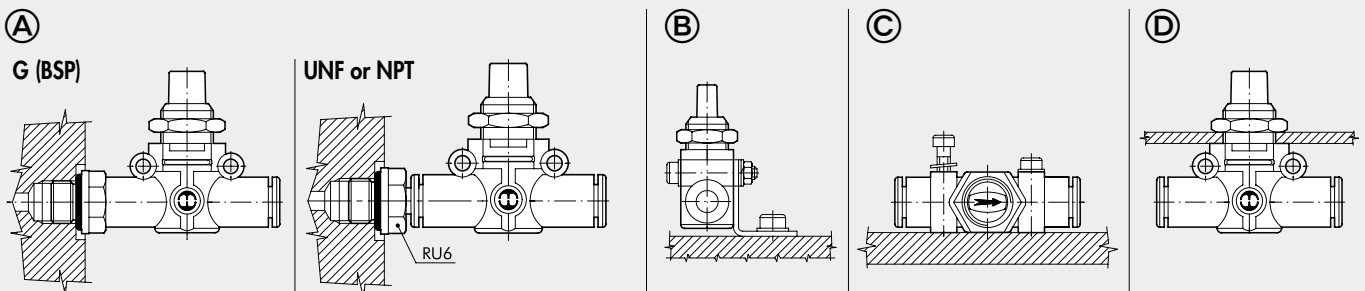
		Ø 6	Ø 1/4"	Ø 8 (Ø5/16")
Operating pressure	MPa		1	
	bar		10	
	psi		145	
Temperature range	°C		- 20 to + 60	
	°F		- 4 to + 140	
Flow rate at 6.3 bar ΔP 1 bar	NI/min	280	280	470
Exhaust flow rate at 6.3 bar	NI/min	110	110	110
Recommended pipe		Rilsan PA11 - Nylon 6 - Polyamide 12 - Polypropylene		
Fluid		Lubricated or unlubricated filtered compressed air; if used, must be continuous		
Compatibility with oils		See <b>chapter Z1</b>		

## COMPONENTS

- ① Technopolymer body
- ② Nickel-plated brass insert
- ③ Brass rod
- ④ Technopolymer knob
- ⑤ NBR valve
- ⑥ Stainless steel valve compression spring
- ⑦ Nickel-plated brass wall-mount ring nut
- ⑧ NBR gasket
- ⑨ Technopolymer spring ring
- ⑩ Stainless steel folding spring
- ⑪ Technopolymer locking bushing
- ⑫ Technopolymer release bushing

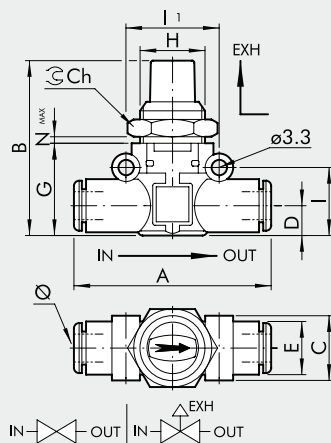


## ASSEMBLY OPTIONS



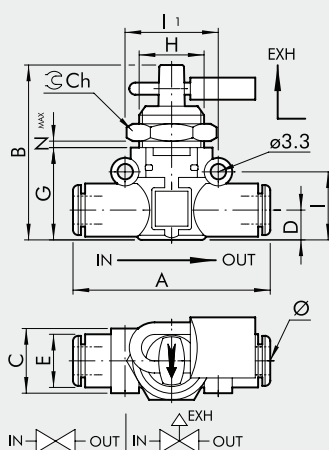
How to mount the V2V/V3V L:

- Fig. **A** **G (BSP)**: With the male threaded port it is possible to mount the V2V/V3V L straight onto the female thread.  
**UNF or NPT**: Adding a RU6 fitting, with his male UNF or NPT thread, it is possible to mount the V2V/V3V L straight on to the actuator or the control valve.
- Fig. **B** Fixing to the plate with the special SQU L bracket.
- Fig. **C** There are two robust rings on the plastic body for fixing the V2V/V3V L straight onto the wall.
- Fig. **D** The rig nut is screwed onto the threaded metal part of the V2V/V3V L body for panel mounting.

**V2V/V3V L PIPE - PIPE**


Code	Ref.	Ø	A	B	C	D	E	G	H	I	II	Ch	Nmax
9065016	V2V L Ø6-Ø6	6	49.4	41	14.7	6.4	11.4	21	M15x1	14.6	20	17	5.5
9066016	V3V L Ø6-Ø6												
9065016U	V2V L Ø1/4-Ø1/4	1/4	49.4	41	14.7	6.4	11.4	21	M15x1	14.6	20	17	5.5
9066016U	V3V L Ø1/4-Ø1/4												
9065024	V2V L Ø8-Ø8	8 ▲	57.3	46	18.7	9.1	13.8	26	M15x1	18.7	24	17	5.5
9066024	V3V L Ø8-Ø8												

▲ Ø8 = Ø5/16"

**V2V/V3V L PIPE - PIPE PADLOCKED**


Code	Ref.	Ø	A	B	C	D	E	G	H	I	II	Ch	Nmax
9065116	V2V L Ø6-Ø6 KEY	6	49.4	41	14.7	6.4	11.4	21	M15x1	14.6	20	17	5.5
9066116	V3V L Ø6-Ø6 KEY												
9065116U	V2V L Ø1/4-Ø1/4 KEY	1/4	49.4	41	14.7	6.4	11.4	21	M15x1	14.6	20	17	5.5
9066116U	V3V L Ø1/4-Ø1/4 KEY												
9065124	V2V L Ø8-Ø8 KEY	8 ▲	57.3	46	18.7	9.1	13.8	26	M15x1	18.7	24	17	5.5
9066124	V3V L Ø8-Ø8 KEY												

▲ Ø8 = Ø5/16"