

High Flow Pneumatic Timer

Valve operation

This is a high-flow 5 way valve with a pneumatic timer which allows the automatic return of the valve after a preset time. The time is adjusted by screw (R).

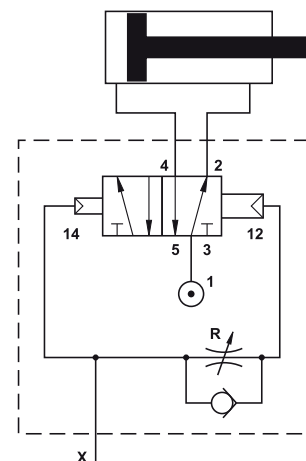
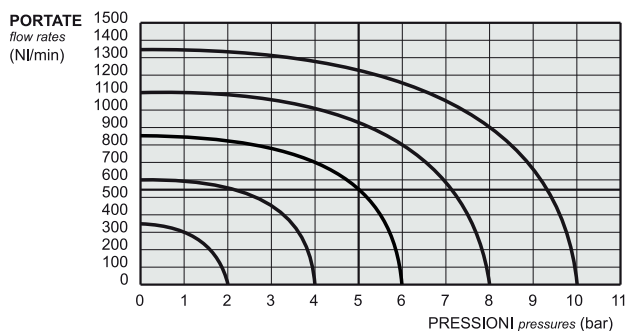
When a signal is applied to X the valve will stay operated until the time which was set at R has elapsed, and then the valve will automatically re-set. To repeat the cycle the signal must be exhausted and then applied again.

If a momentary signal is applied the valve will operate as a conventional 5 way mono-stable valve without the time delay function.

The valve will only operate when pressure signal is applied to X.

ORDER CODE

00.074.4



| | |
|-----------------------|--|
| Ports | G1/8" |
| Working pressure | 2 ... 10 bar 0.2 ... 1 MPa |
| Actuating pressure | 3 ... 10 bar 0.3 ... 1 MPa |
| Temperature range | max +60°C |
| Time regulation range | 0 ... 10 s |
| Fluid | 50µ filtered, lubricated or non lubricated air |

Materials

Body: aluminium 11S

Springs: stainless steel

Seals: NBR

Spool: nickel plated aluminium

Internal parts: brass OT58

