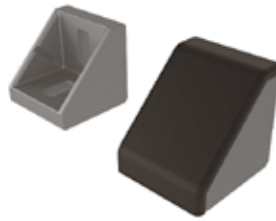
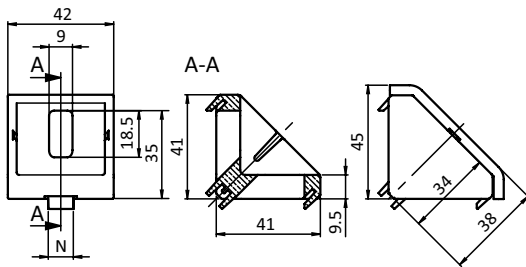




ALUWINKEL 45

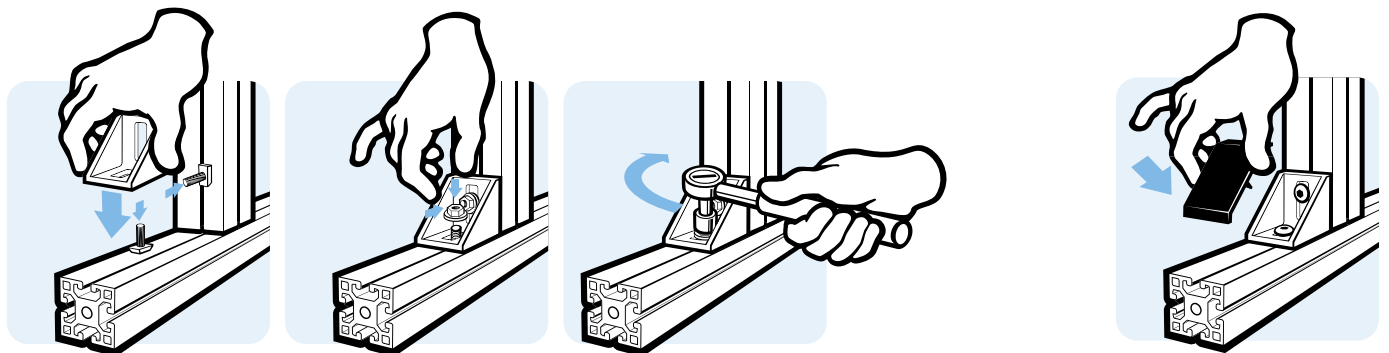
ALU CONNECTION ANGLE 45

| | | | |
|----------------------|--|----------------------|---|
| Ausführung | Aluminiumdruckguss, ab Profil 45 | Model | Aluminum die-cast, profile 45 and up |
| Beschreibung | zur rechtwinkligen Verbindung von Profilen und Flächenelementen; die offene Seite des Winkels kann durch die Abdeckkappe verschlossen werden | Description | To connect two aluminum profiles or panels at right angles; the connection angle can be closed with the cover cap |
| Material | Winkel: Aluminiumdruckguss Abdeckkappe: Kunststoff PA, glasfaserverstärkt Nutfixierung: Kunststoff PA, glasfaserverstärkt Montageset: Stahl | Material | Angle: Aluminum die-cast Cover cap: Plastic PA, glass fiber reinforced Centering piece: Plastic PA, glass fiber reinforced Assembly set: Steel |
| Farbe | Abdeckkappe: schwarz, grau Nutfixierung: schwarz | Color | Cover cap: Black, gray Centering piece: Black |
| Montageset | 2 Hammerschrauben - Nut 10 - M8 × 25, 2 Flanschmuttern M8 | Assembly Set | 2 hammer head screws - slot 10 - M8 × 25, 2 flange nuts M8 |
| Liefereinheit | 10 Stück | Pack Quantity | 10 pieces |
| Extras | weitere Oberflächen, weitere Farben auf Anfrage | Specials | Other surfaces, other colors on request |



Aluwinkel 45
Alu Connection Angle 45

| | N | Gewicht [g] Weight [g] | Profil Profile | Teil-Nr. Part # |
|---|---|---------------------------|-------------------|----------------------|
| blank <i>Plain</i> | | 49.5 | | 093W421 |
| | 8 | 50.7 | | 093W421N08 |
| | 10 | 53.6 | | 093W421N10 |
| alufarbig <i>Alu color</i> | 10 | 54.0 | | 093W421N10S08 |
| Nutfixierung <i>Centering pieces</i> | Nut 8 auf Nut 10 <i>Slot 8 to slot 10</i> | 1.0 | | 093W02 |
| Abdeckkappe flach schwarz <i>Flat cover cap black</i> | | 13.8 | | 093WA421S02 |
| blank, inkl. Montageset <i>Plain, with assembly set</i> | 10 | 97.6 | B | 093W421N10S04 |
| alufarbig, inkl. Montageset <i>Alu color, with assembly set</i> | 10 | 98.0 | B | 093W421N10S09 |

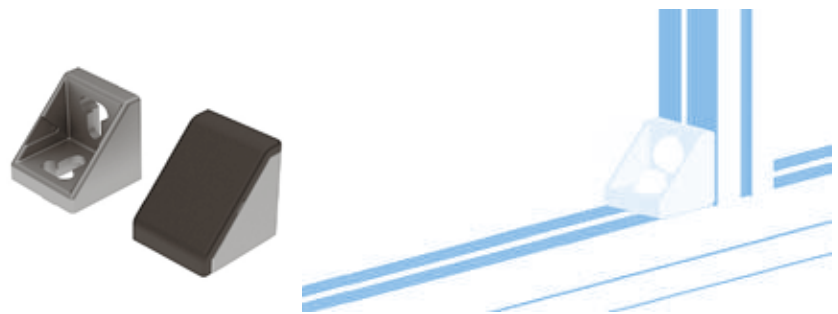
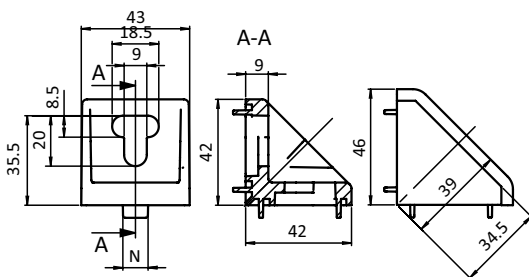




ALUWINKEL 43 × 42

ALU CONNECTION ANGLE 43 × 42

| | | | |
|----------------------|--|----------------------|---|
| Ausführung | Aluminiumdruckguss, ab Profil 45 | Model | Aluminum die-cast, profile 45 and up |
| Beschreibung | zur rechtwinkligen Verbindung von Profilen und Flächenelementen, die offene Seite des Winkels kann durch die Abdeckkappe verschlossen werden | Description | To connect two aluminum profiles or panels at right angles; the connection angle can be closed with the cover cap |
| Material | Winkel: Aluminiumdruckguss Abdeckkappe: Kunststoff PA, glasfaserverstärkt Montageset: Stahl | Material | Angle: Aluminum die-cast Cover cap: Plastic PA, glass fiber reinforced Assembly set: Steel |
| Farbe | Abdeckkappe: schwarz | Color | Cover cap: Black |
| Montageset | 2 Hammerschrauben - Nut 10 - M8 × 25, 2 Flanschmutter M8 | Assembly Set | 2 hammer screws - slot 10 - M8 × 25, 2 flange nuts M8 |
| Liefereinheit | 10 Stück | Pack Quantity | 10 pieces |
| Extras | weitere Oberflächen, weitere Farben auf Anfrage | Specials | Other surfaces, other colors on request |



| Aluwinkel 43 × 42 Alu Connection Angle 43 × 42 | N | Gewicht [g] Weight [g] | Profil Profile | Teil-Nr. Part # |
|---|----|---------------------------|-------------------|----------------------|
| blank <i>Plain</i> | 10 | 54.2 | | 093W422N10 |
| Abdeckkappe <i>Cover cap</i> | | 9.0 | | 093WA422 |
| inkl. Montageset <i>With assembly set</i> | 10 | 103.0 | B | 093W422N10S01 |

